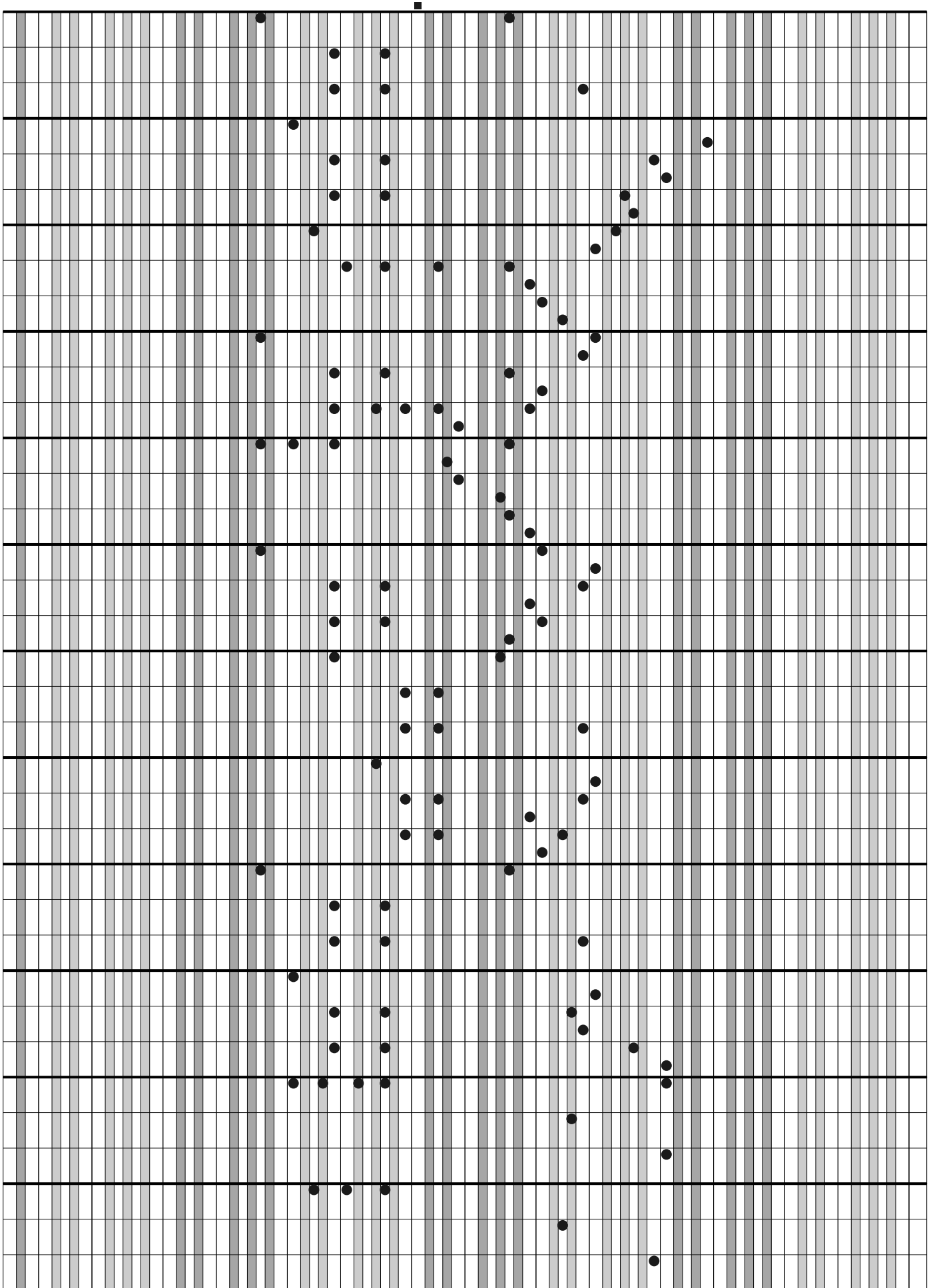




(continuação)



(continuação)

The image shows a musical score for a waltz, labeled '29 Valsa (continuação)'. The score is written on a grand staff consisting of 12 staves. The notation is in treble clef with a key signature of one flat (B-flat). The music is centered on the page, with the first few staves containing the notation and the remaining staves being empty. The notation includes various note values, rests, and beaming. The first staff has a small square symbol above it. The music appears to be a single melodic line.