

(3/4) – Allegro 168

VALSA

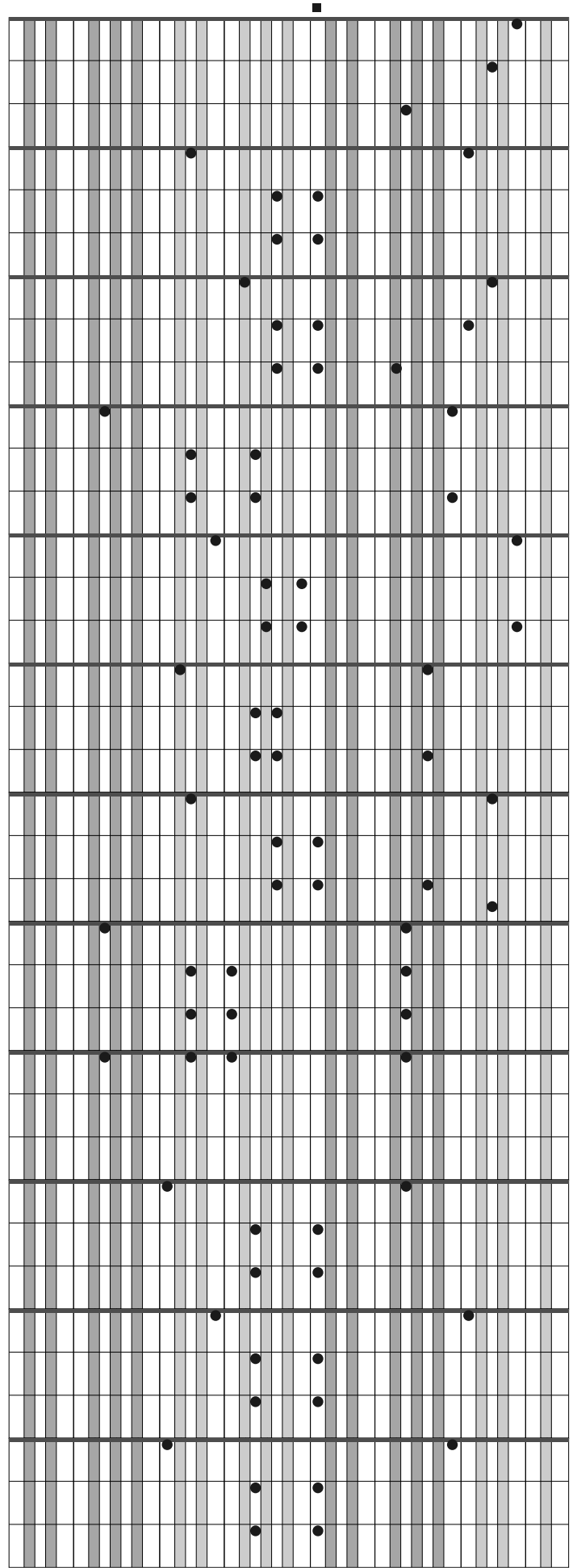
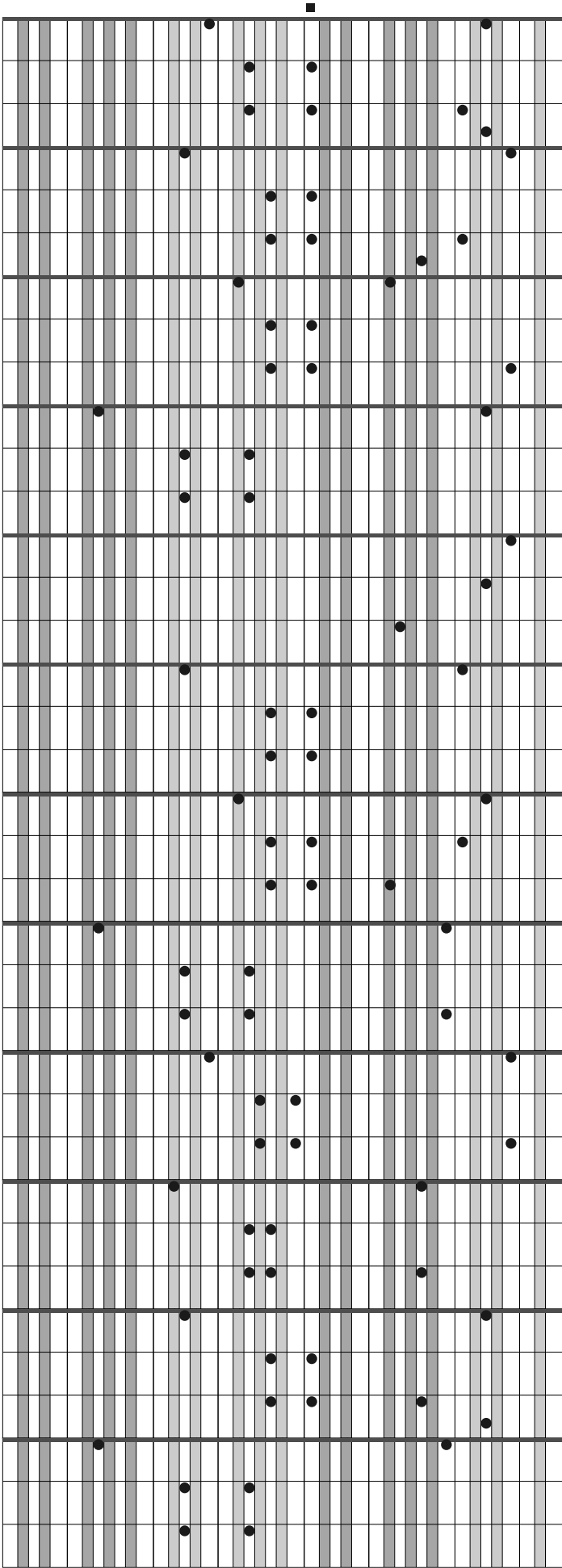
Letra:

Música: J. STRAUSS

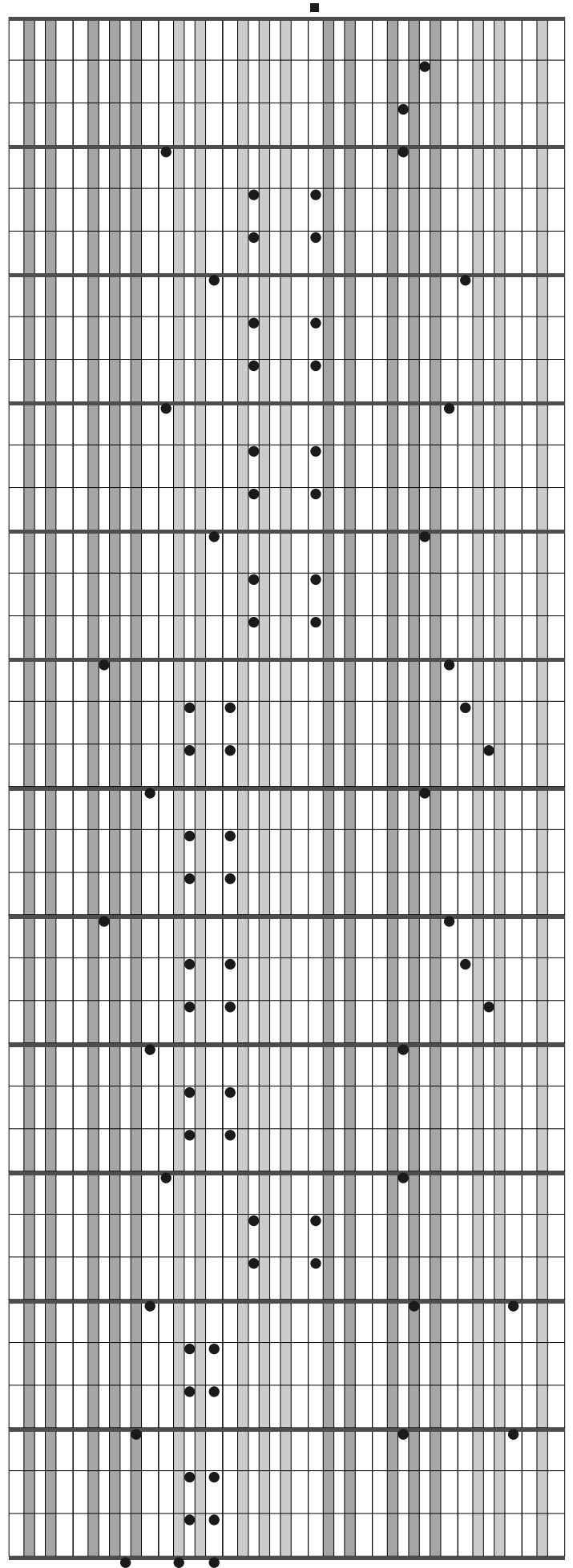
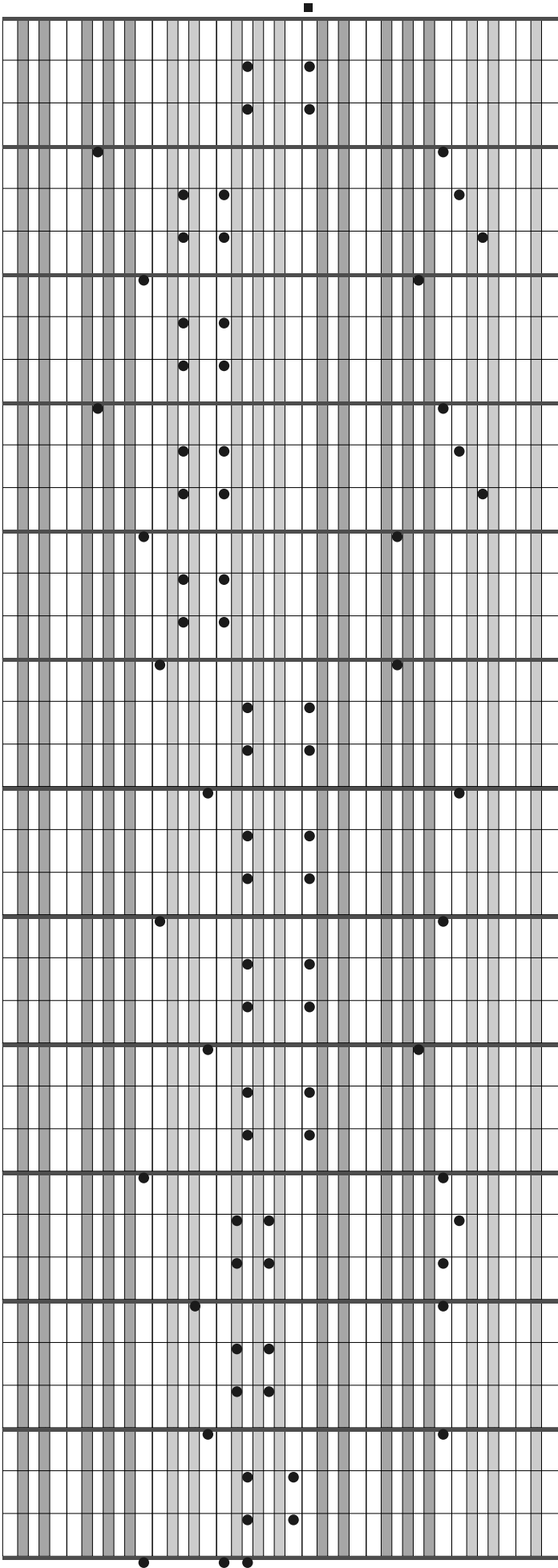
Musical score for the left hand of 'Rosas do Sul'. The score is written on 12 staves. It begins with a treble clef and a 3/4 time signature. The music is in G major and consists of 16 measures. A square marker is placed above the 8th measure. The notation includes quarter notes, eighth notes, and sixteenth notes, with some rests.

Musical score for the right hand of 'Rosas do Sul'. The score is written on 12 staves. It begins with a treble clef and a 3/4 time signature. The music is in G major and consists of 16 measures. A square marker is placed above the 8th measure. The notation includes quarter notes, eighth notes, and sixteenth notes, with some rests.

(continuação)



(continuação)



(continuação)

