

(6/8)

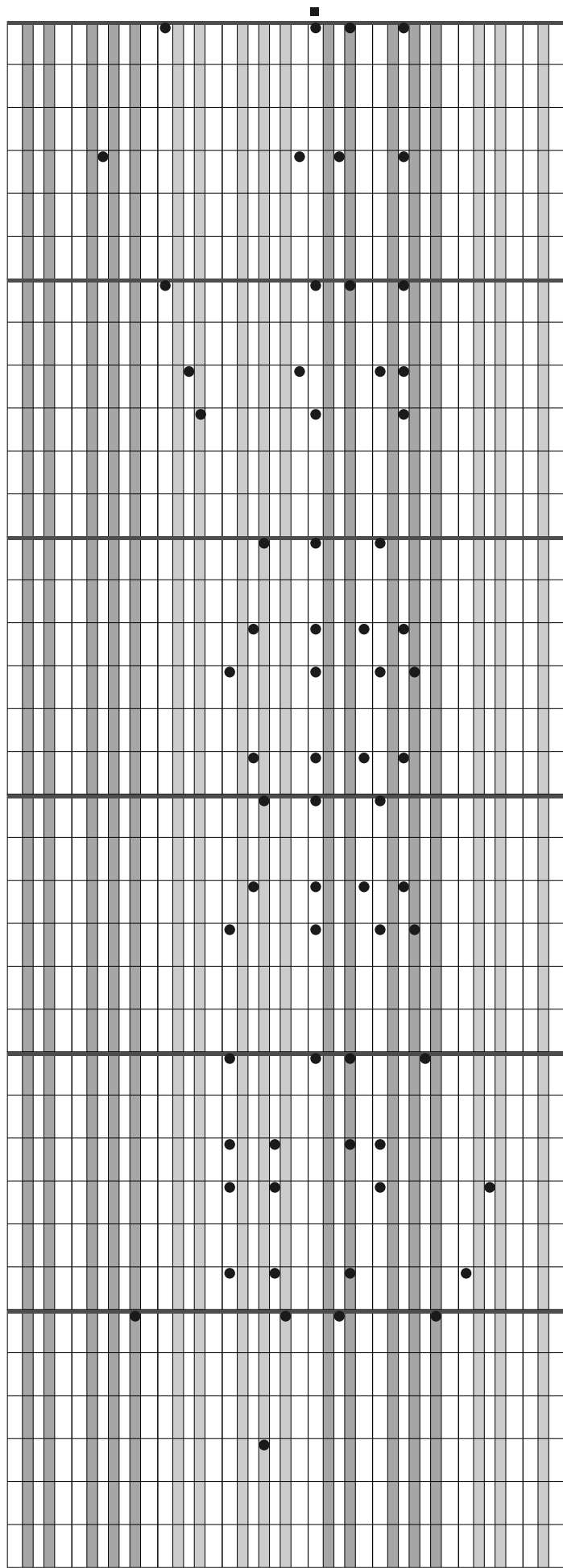
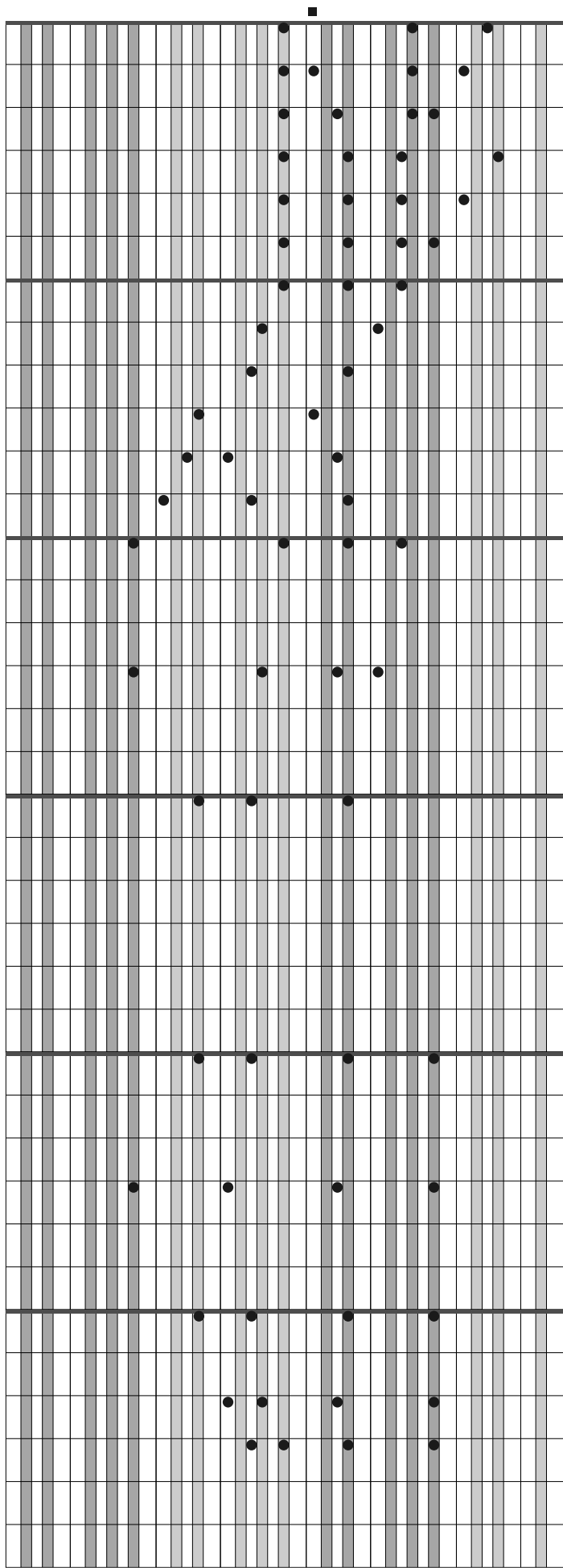
Letra: Manuel Avelino de Souza, 1917

Música: Samuel W. Beazley, 1910

The left staff of the musical score consists of 12 systems of five-line staves. The music is written in a simplified notation style using black dots for notes and stems. The melody is primarily composed of quarter and eighth notes, with some rests. The piece concludes with a small square symbol at the end of the final staff.

The right staff of the musical score consists of 12 systems of five-line staves. The music is written in a simplified notation style using black dots for notes and stems. The melody is primarily composed of quarter and eighth notes, with some rests. The piece concludes with a small square symbol at the end of the final staff.

(continuação)



(continuação)

