

(3/4) – Allegro 160 Tempo de Valsa

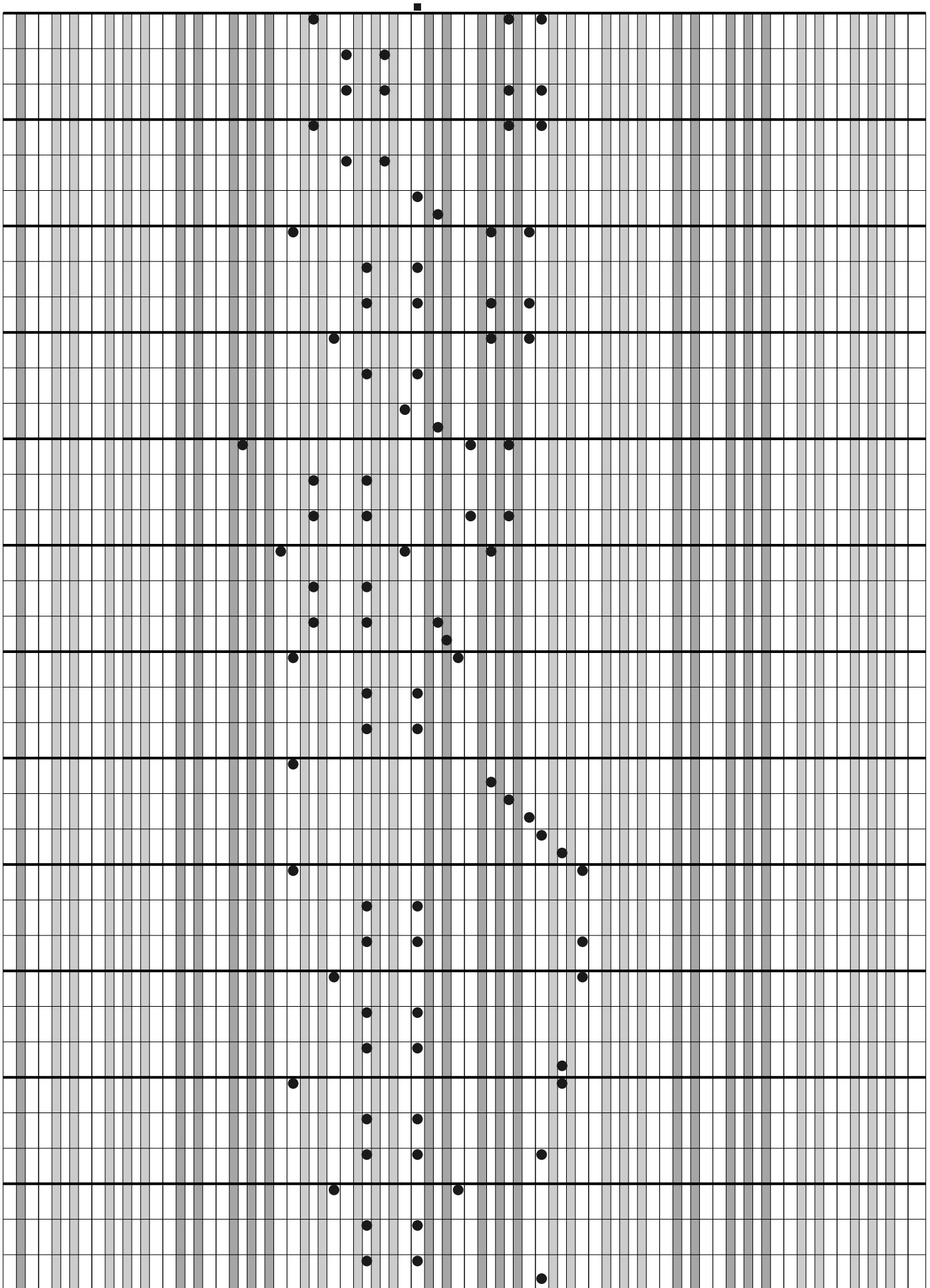
VALSA

Letra:

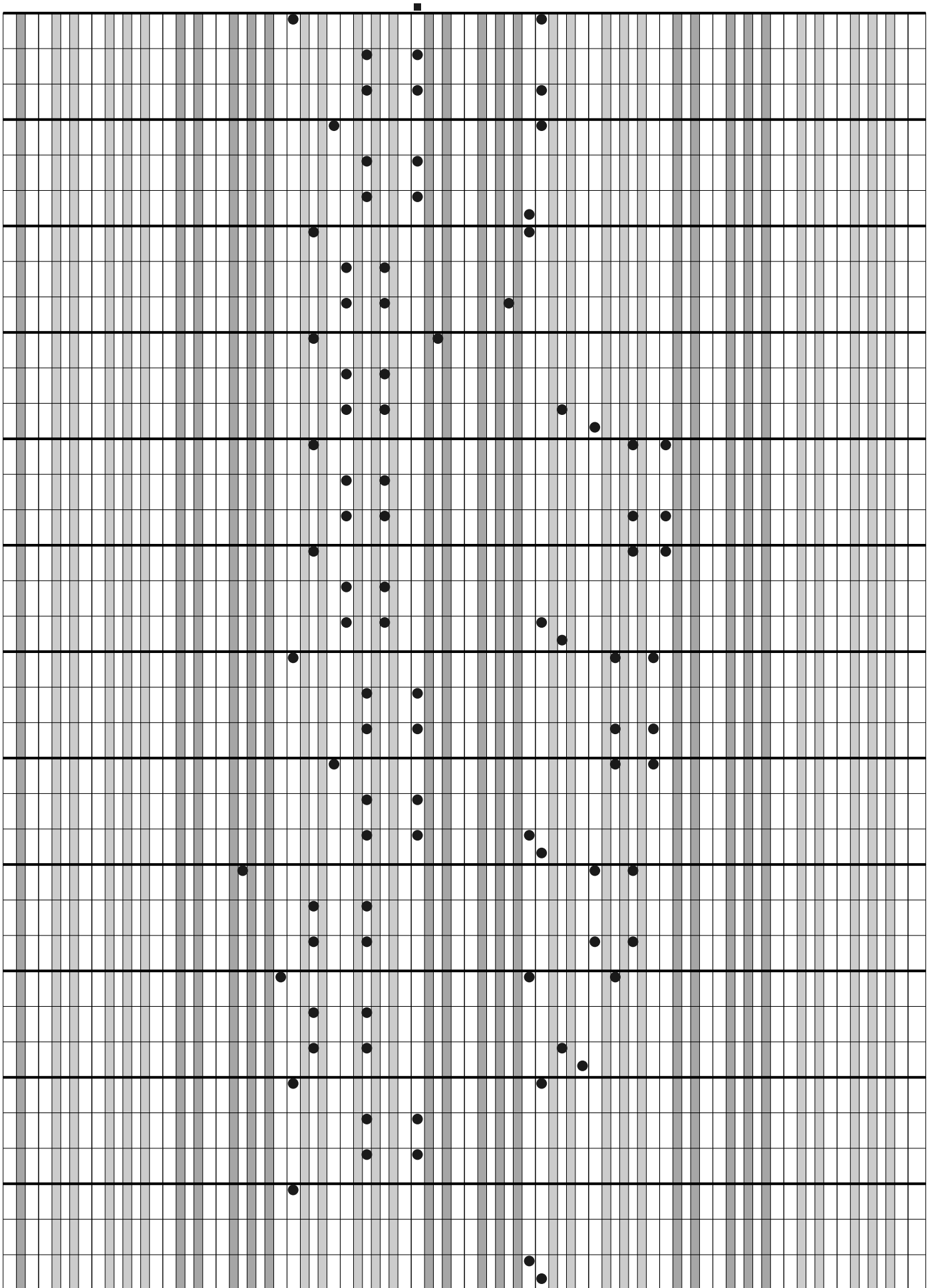
Música: J. STRAUSS

The image shows a musical score on a 12-staff grid. The notation is a simplified form of musical notation, likely for a specific instrument. It consists of black dots (notes) and a vertical bar line. The notes are arranged in a pattern that suggests a melodic line. The bar line is positioned at the top of the grid, indicating the start of the piece. The notes are distributed across the staves, with some notes appearing on the same staff and others on different staves. The overall layout is clean and organized, typical of a music manuscript.

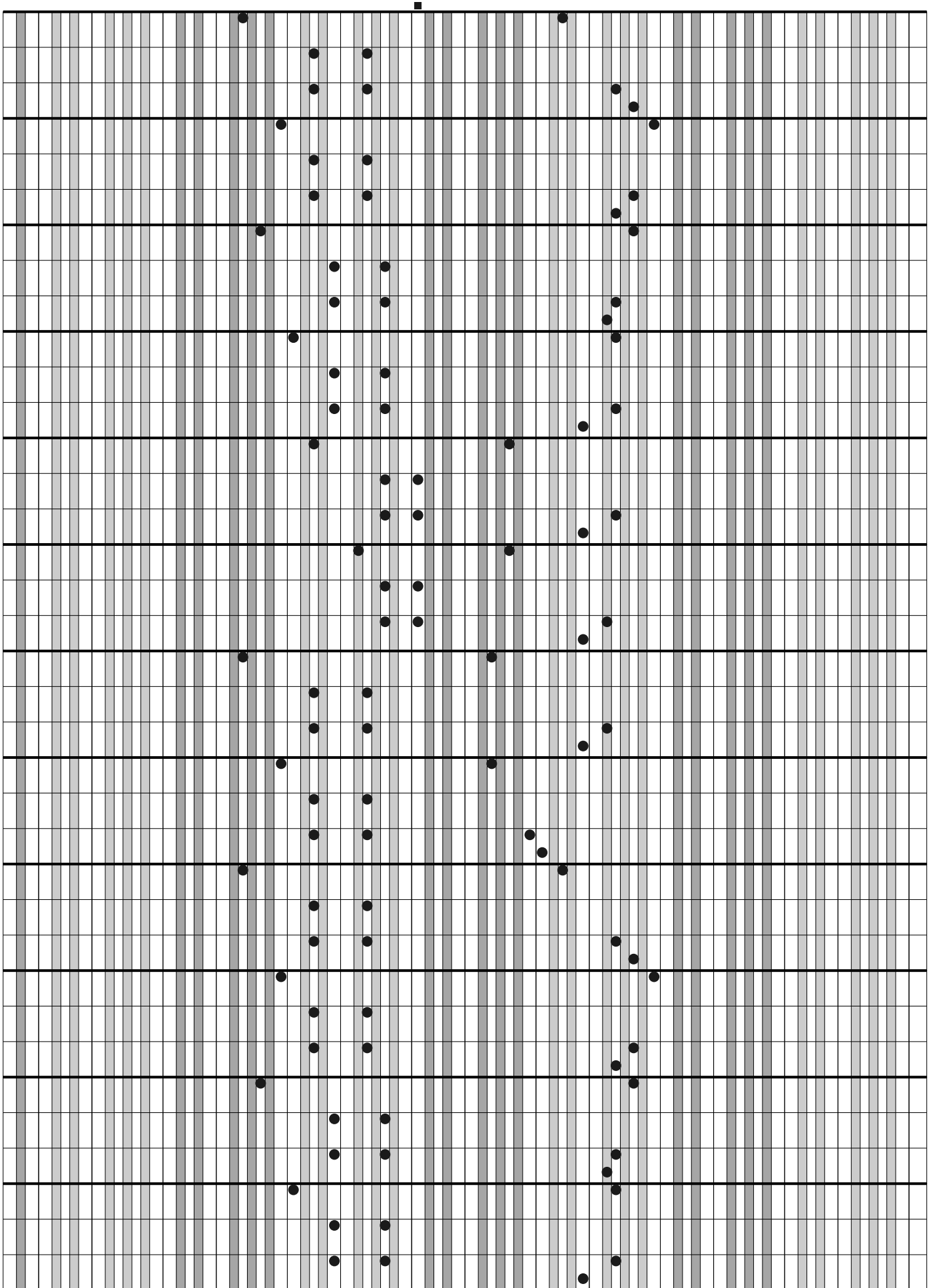
(continuação)



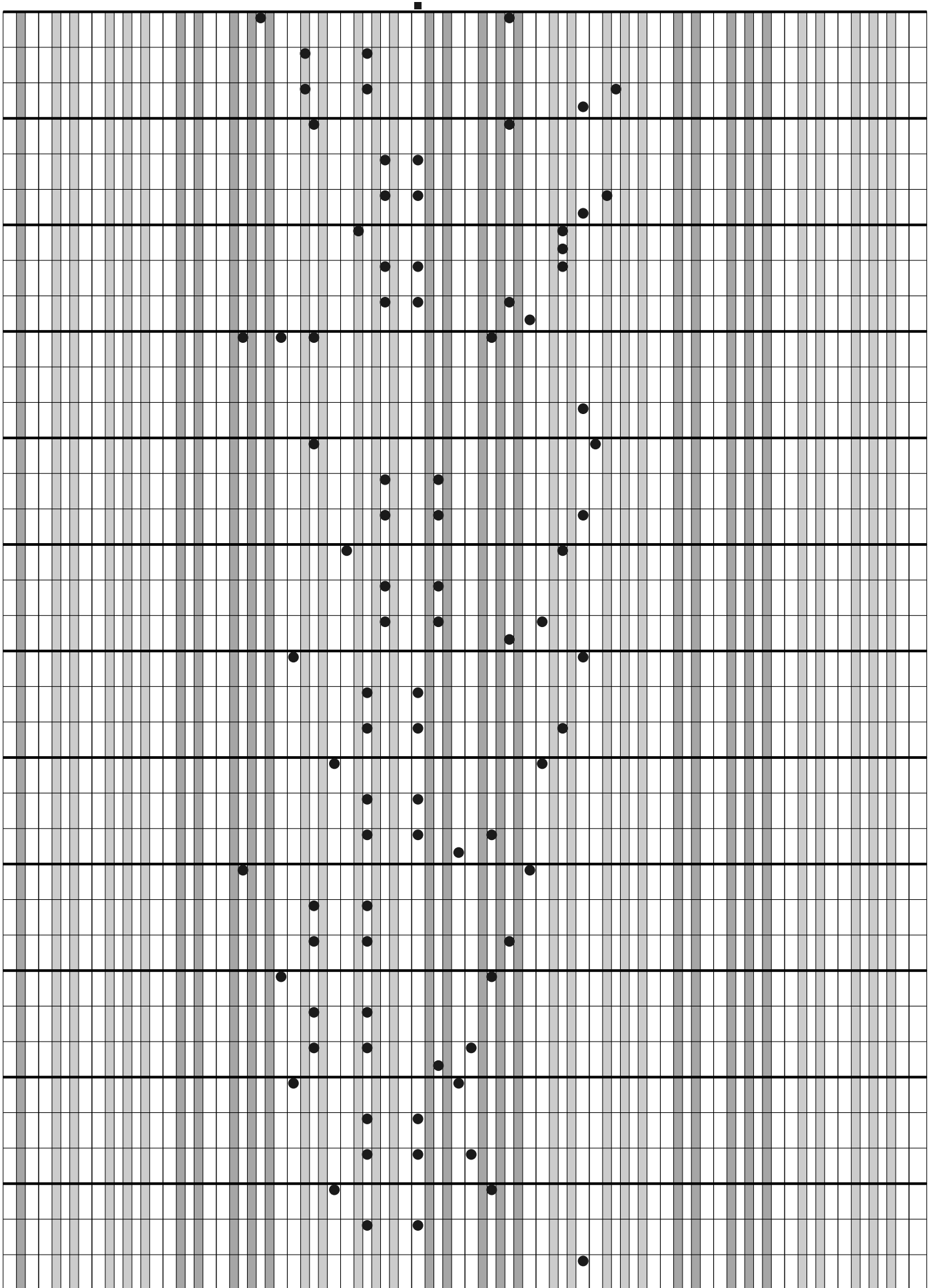
(continuação)



(continuação)



(continuação)



(continuação)

