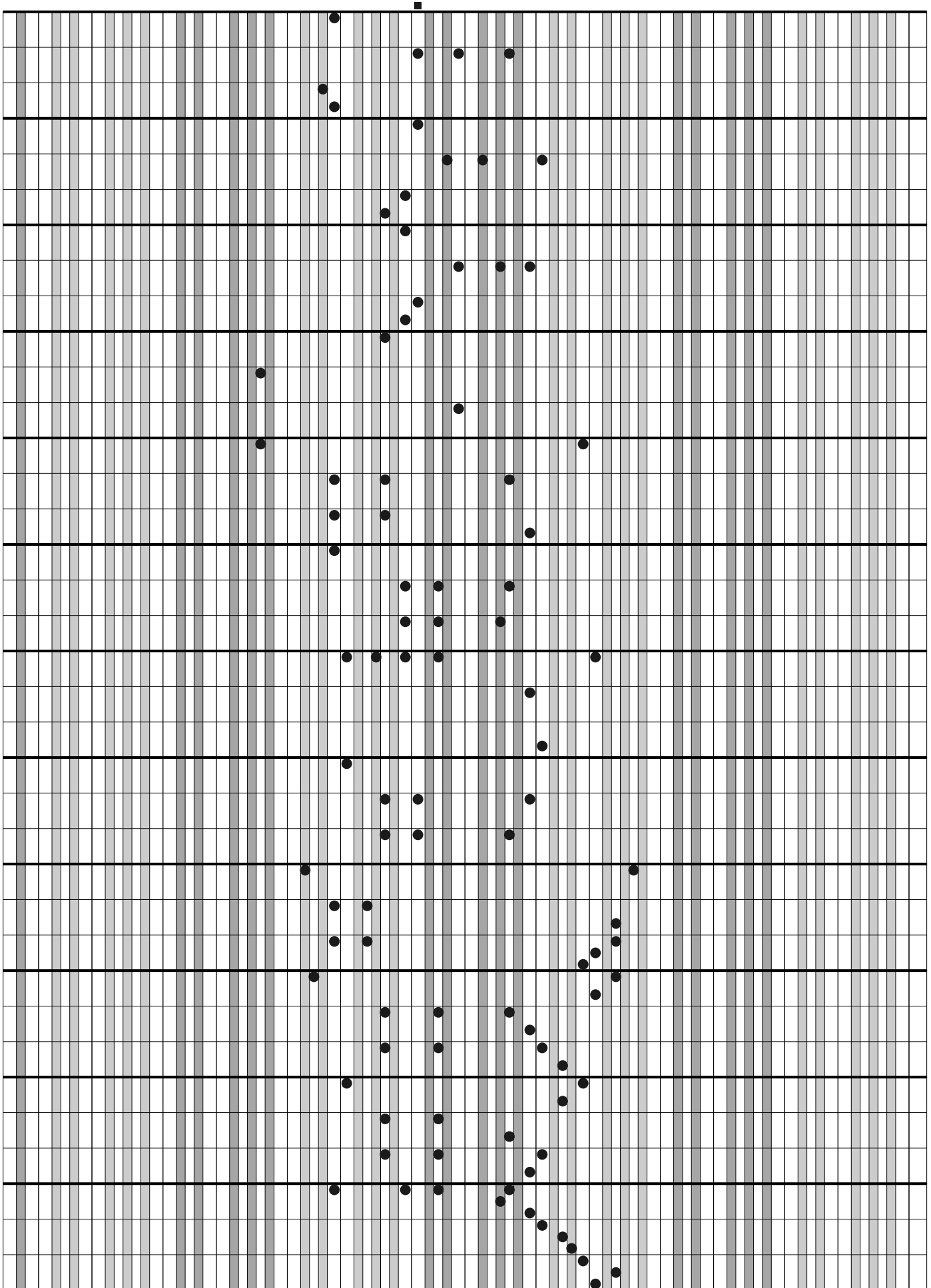


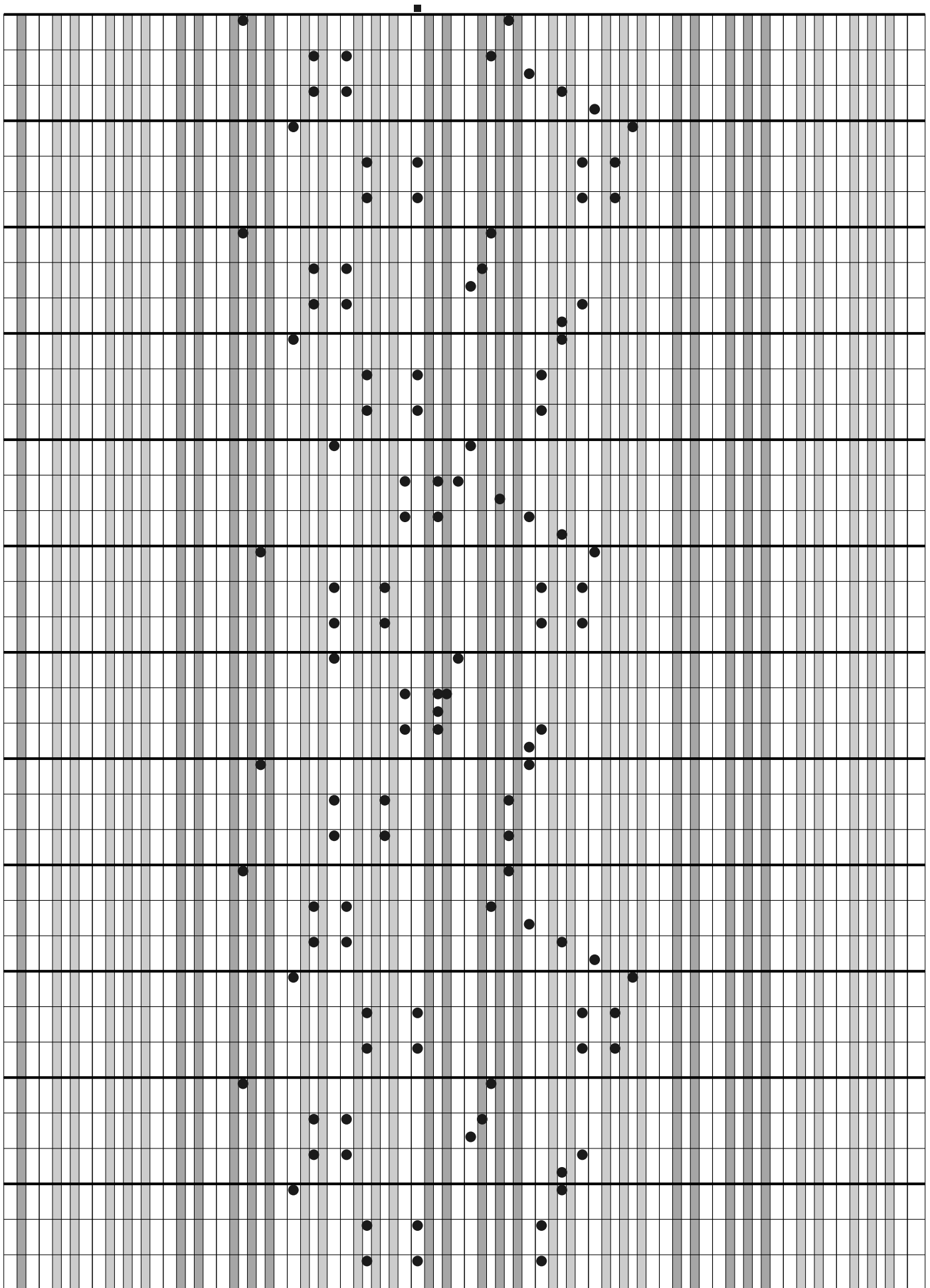
Letra:
Música: F. CHOPIN

The image displays a musical score for a waltz, presented as a series of 12 horizontal staves. The notation is minimalist, consisting of black dots representing notes and a small square at the top center representing a key signature. The notes are arranged in a pattern that suggests a melodic line, with some notes appearing in pairs or groups across different staves. The background is a grid of vertical lines, alternating between light and dark gray, which serves as a guide for the horizontal placement of notes. The overall layout is clean and modern, focusing on the rhythmic and melodic structure of the piece.

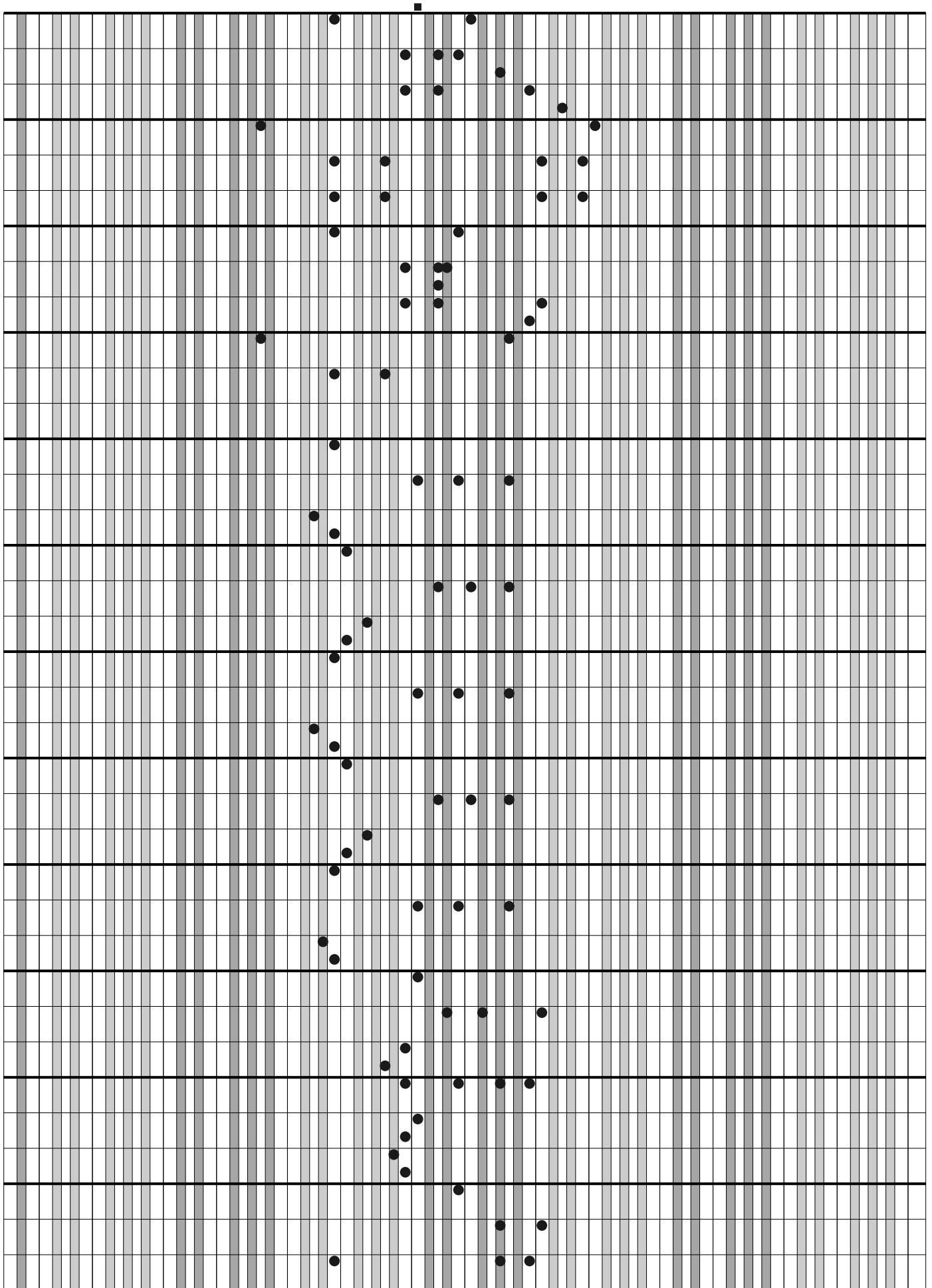
(continuação)



(continuação)



(continuação)



(continuação)

The image shows a large grid for musical notation, consisting of 12 horizontal staves. The grid is divided into three sections by vertical lines. The first section, on the left, contains a partial score for a waltz, with notes and rests plotted on the staves. The second section, in the middle, contains a few scattered notes. The third section, on the right, is empty. The notes are represented by black dots, and the rests are represented by small squares. The grid is composed of 12 horizontal staves, each with 12 vertical lines, creating a 12x12 grid of cells. The notes are plotted on the grid lines, and the rests are plotted in the cells. The notes are arranged in a pattern that suggests a waltz melody, with a mix of eighth and sixteenth notes. The rests are arranged in a pattern that suggests a waltz accompaniment, with a mix of eighth and sixteenth notes. The notes are plotted on the grid lines, and the rests are plotted in the cells. The notes are arranged in a pattern that suggests a waltz melody, with a mix of eighth and sixteenth notes. The rests are arranged in a pattern that suggests a waltz accompaniment, with a mix of eighth and sixteenth notes.