

(2/4) – Lento a capriccio / Andante maestoso / Vivace / prestíssimo / Presto

Letra:

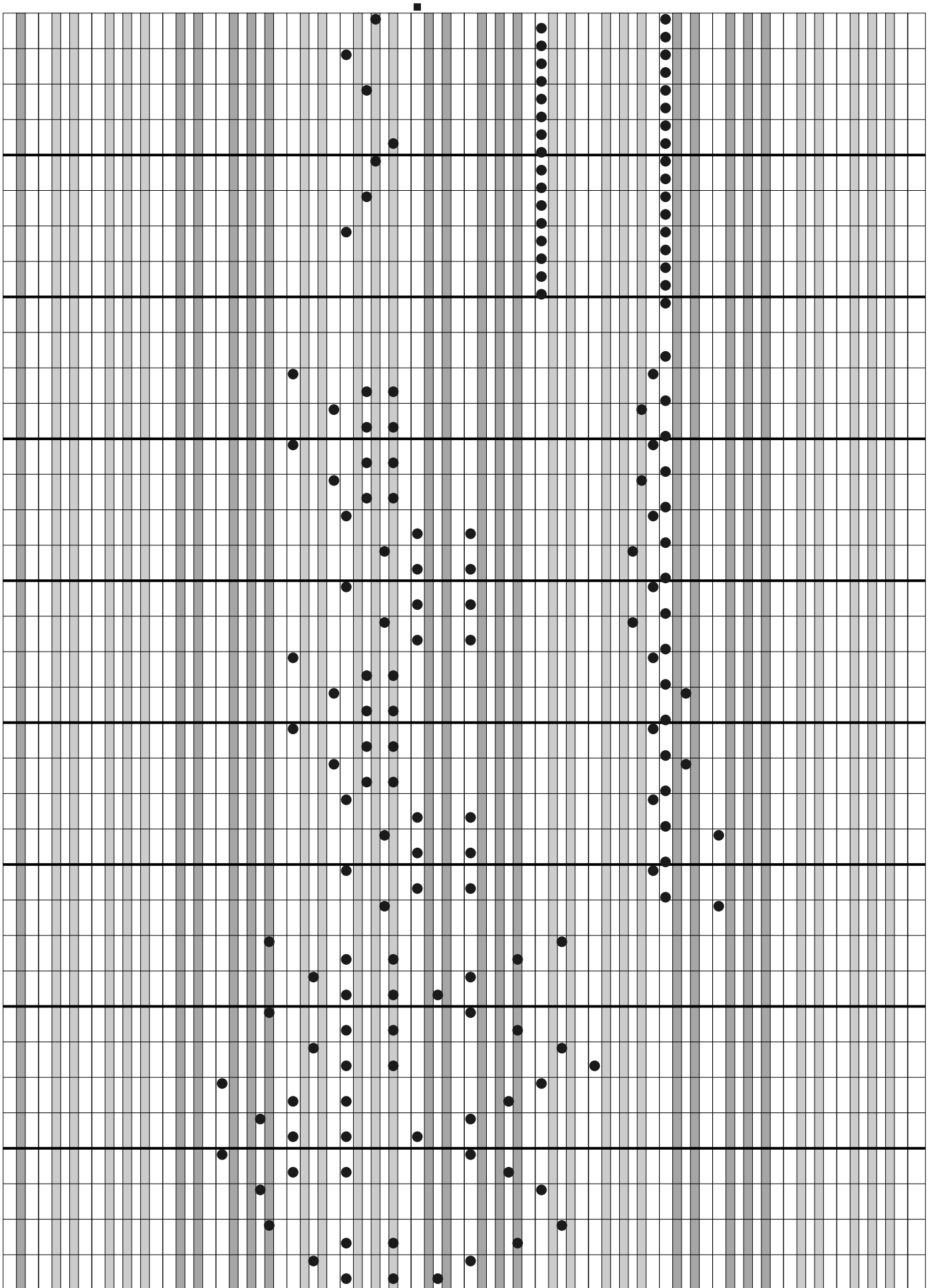
Música: FRANZ LISZT

The image displays a large grid of musical notation for Franz Liszt's Rhapsody No. 2. The grid is composed of 10 horizontal staves, each with 12 vertical lines representing measures. The notation is sparse, with notes and rests placed at various points on the grid. The notes are represented by black dots, and rests are represented by vertical bars. The notation is organized into several distinct sections, with some measures containing multiple notes or rests. The overall layout is clean and professional, typical of a musical score for a specific instrument.

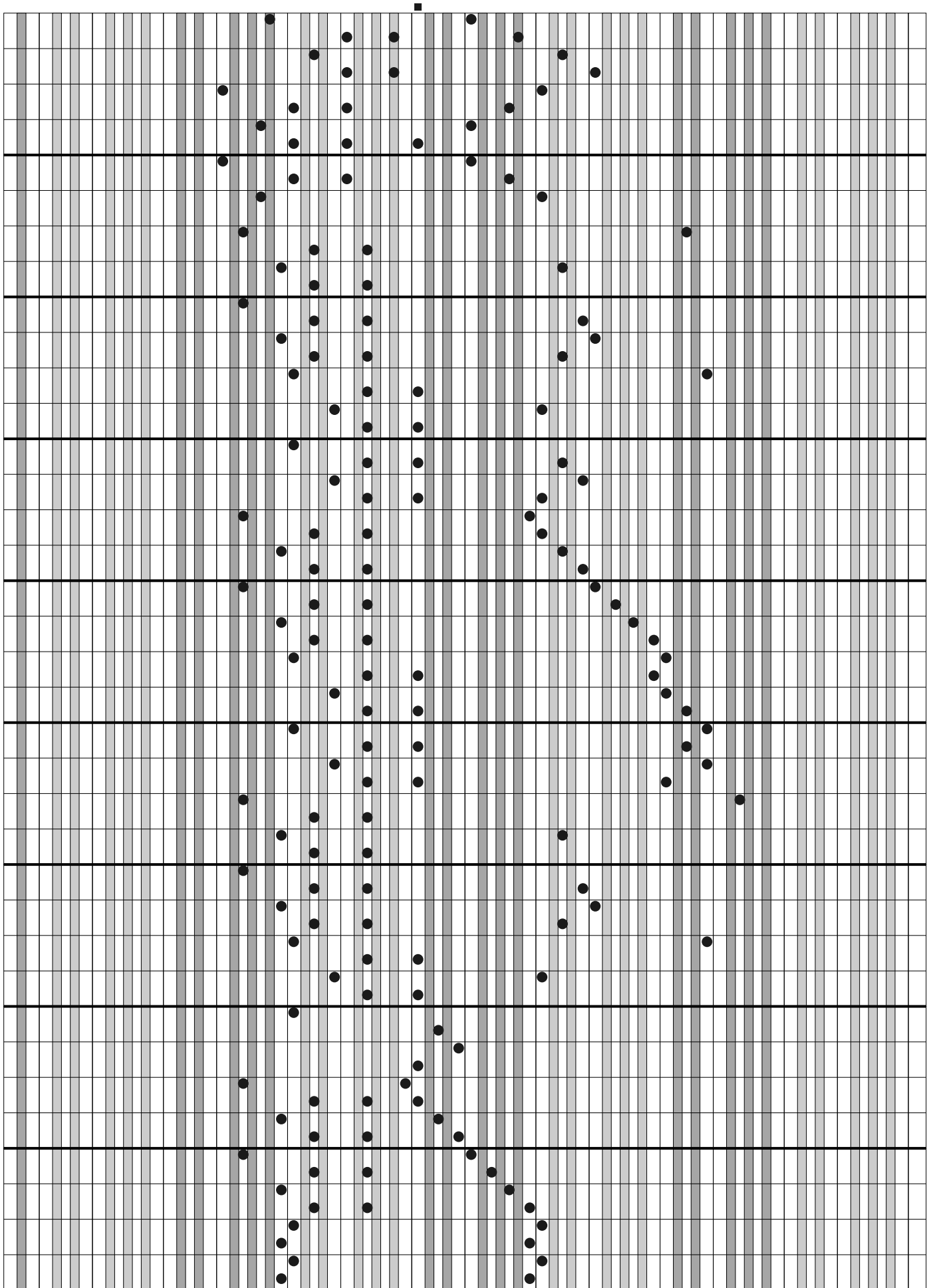
(continuação)

(continuação)

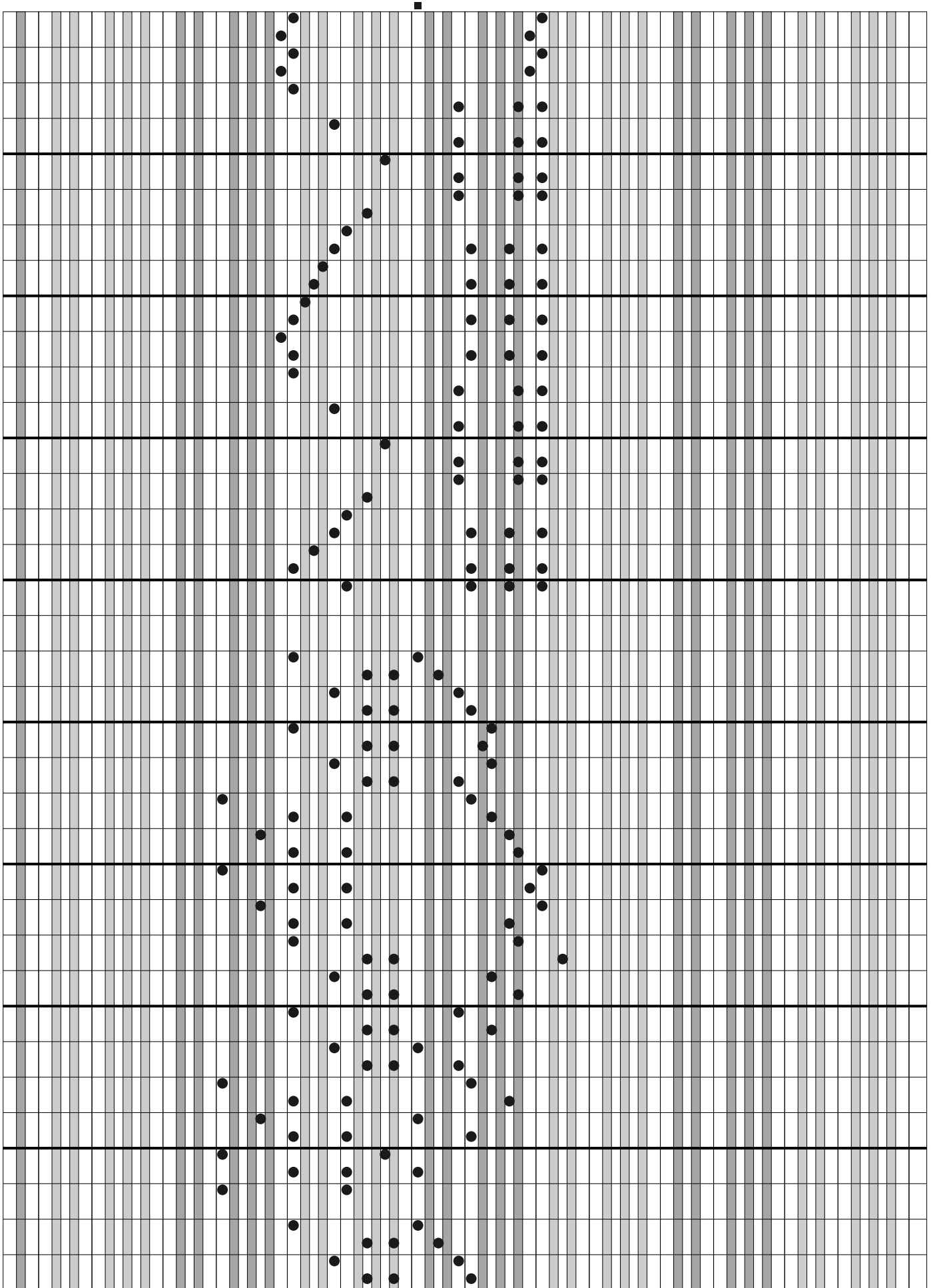
(continuação)



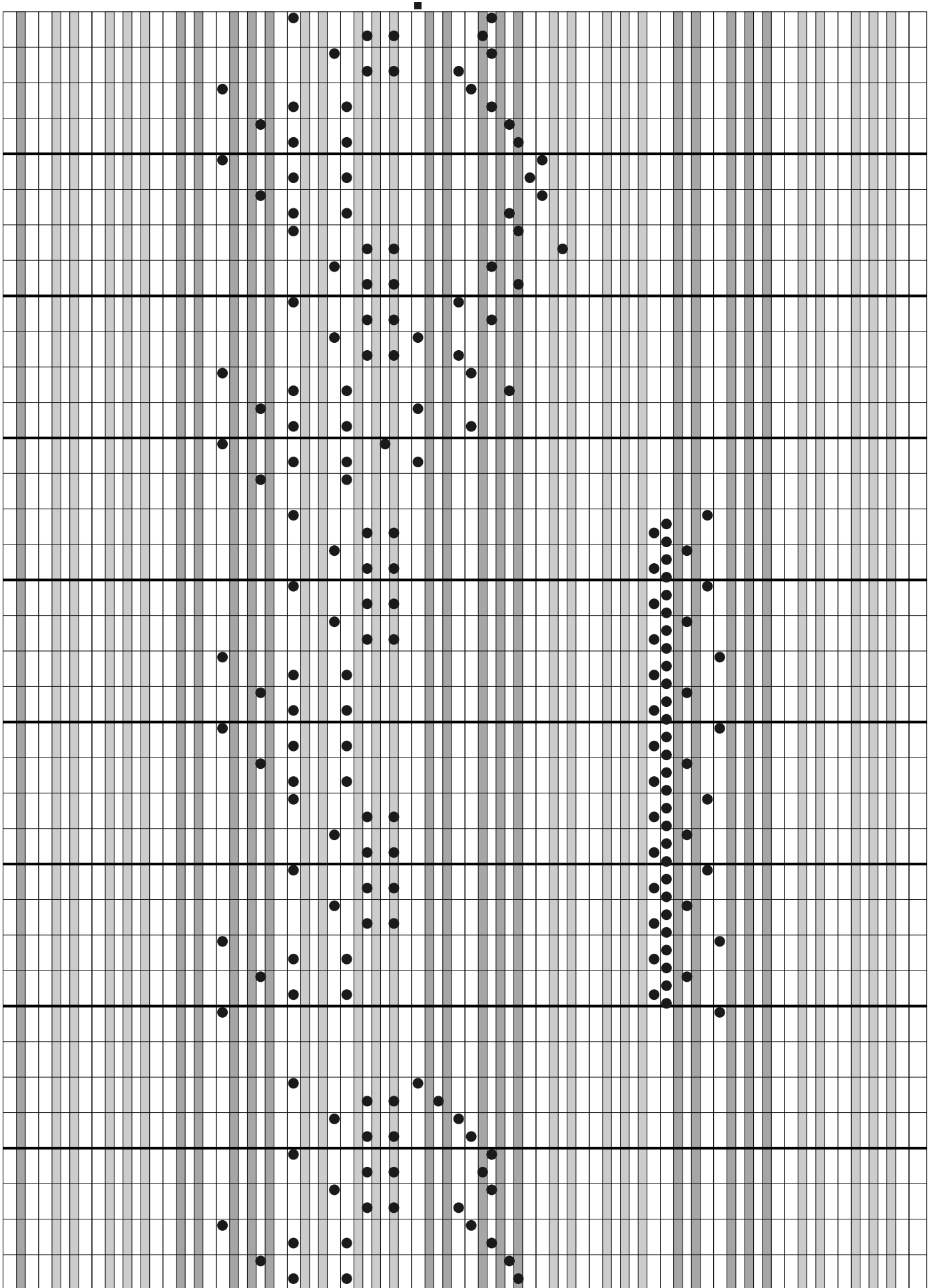
(continuação)



(continuação)



(continuação)



(continuação)