

(3/4) - Andante

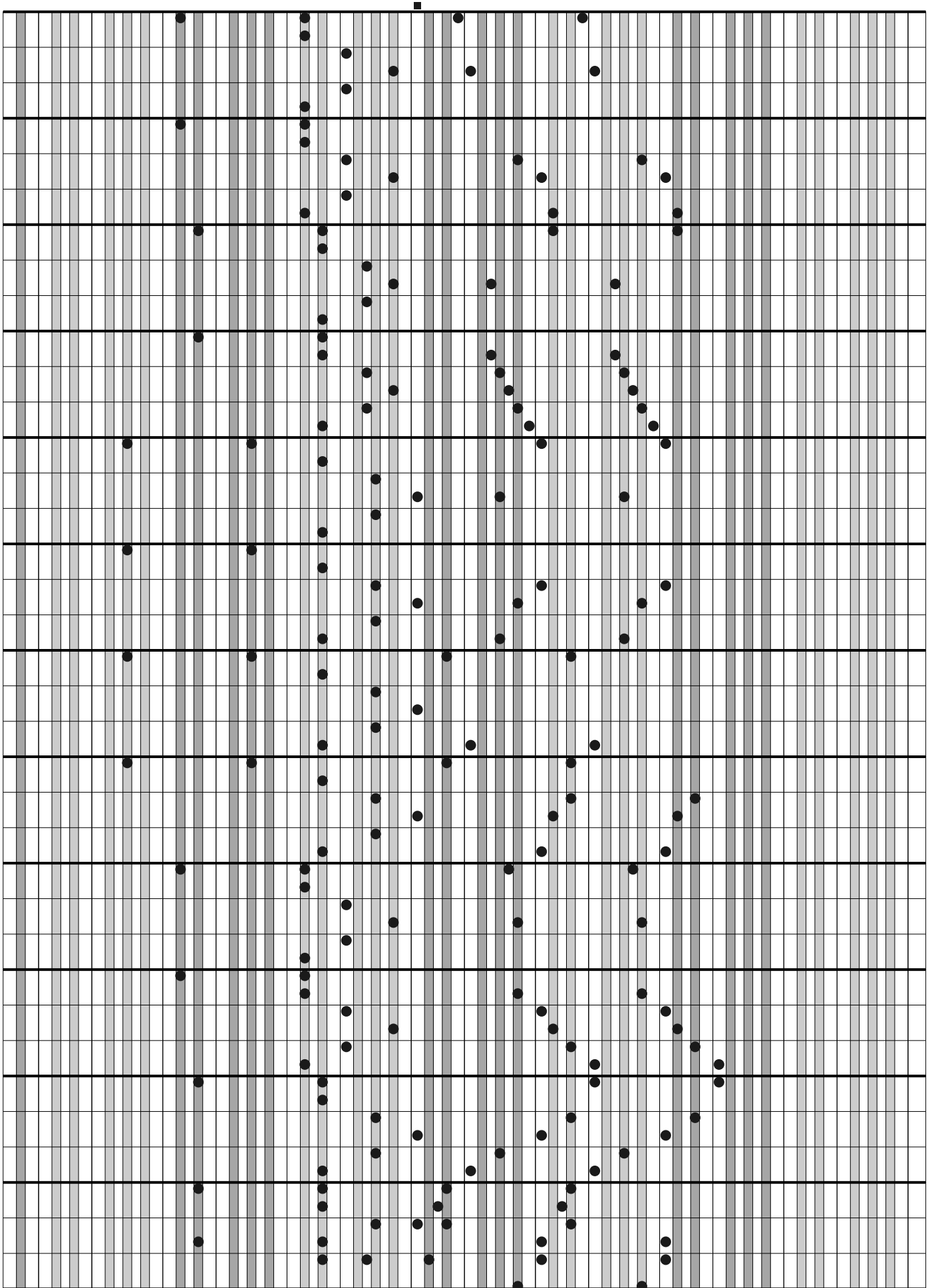
NOTURNO

Letra:

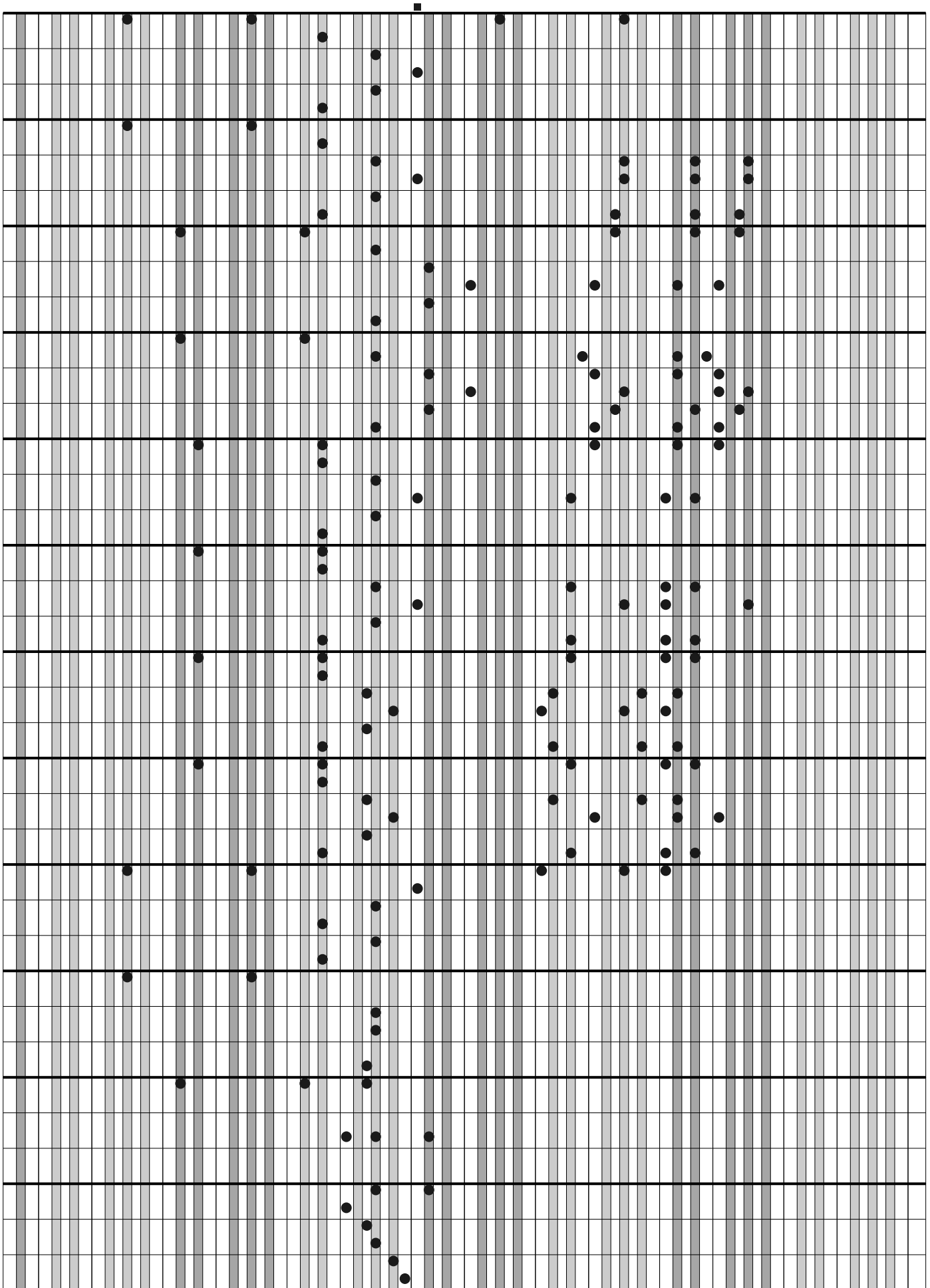
Música: Mme. G. GALOS

The image shows a musical score for guitar on a grid. The grid has 12 horizontal lines representing strings and 12 vertical lines representing frets. A key signature symbol (one flat) is located at the top center. The score consists of several measures of music, with notes placed on the grid to indicate pitch and fret position. The notes are arranged in a way that suggests a melodic line, likely for the first string. The notes are placed on the first string (top line) and move down the fretboard as the piece progresses. The notes are placed on the first string (top line) and move down the fretboard as the piece progresses. The notes are placed on the first string (top line) and move down the fretboard as the piece progresses.

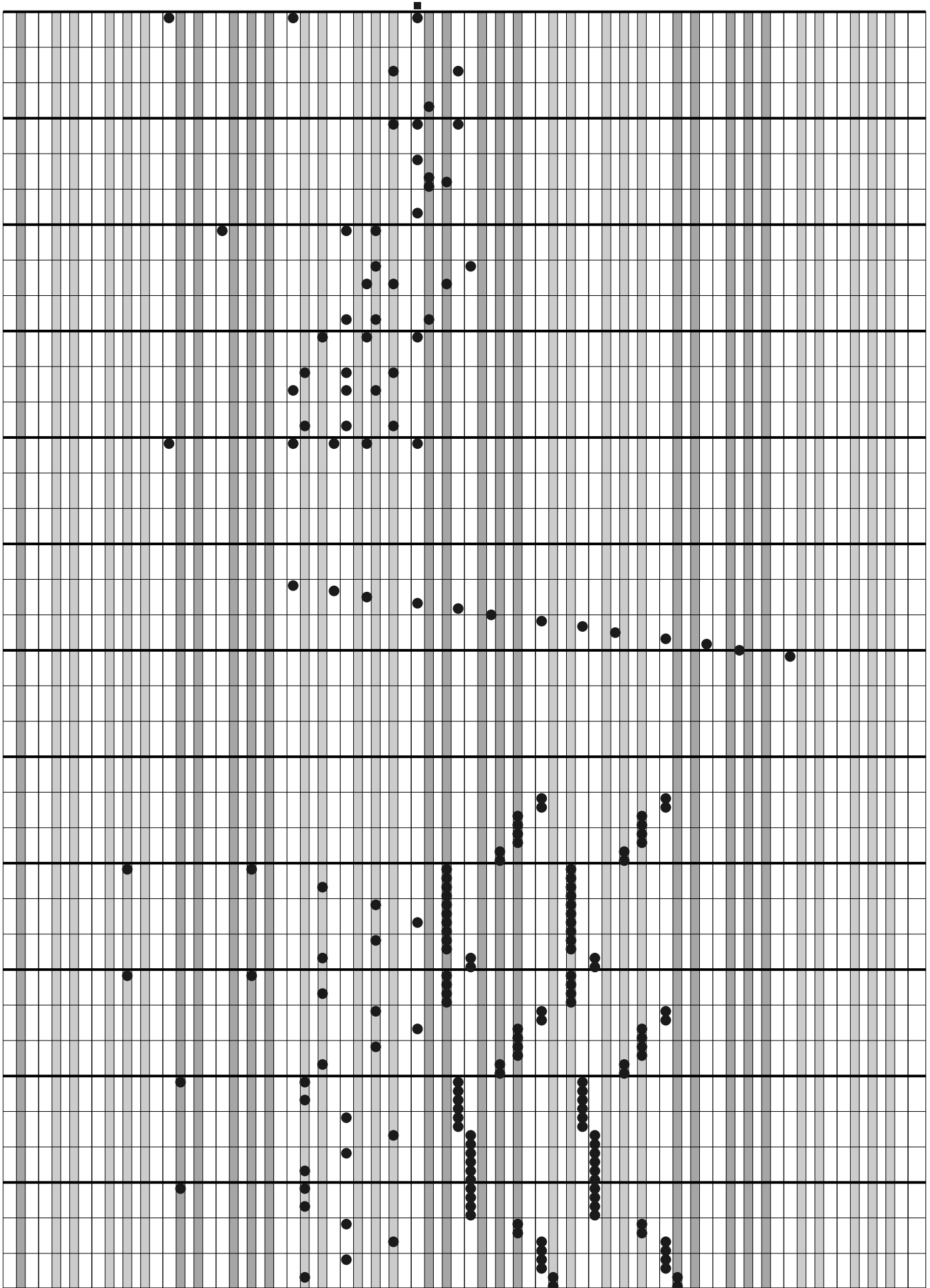
(continuação)



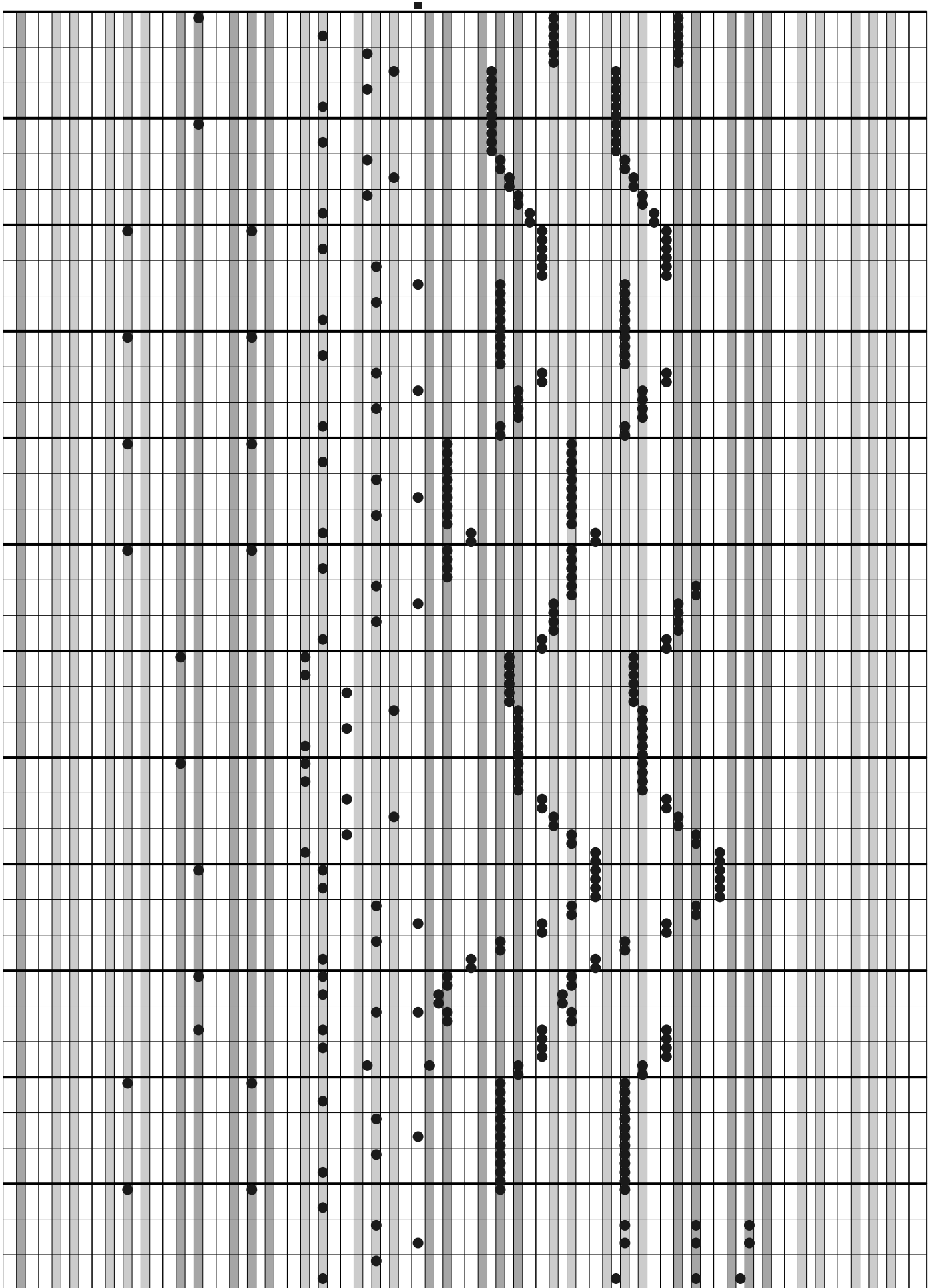
(continuação)



(continuação)



(continuação)



(continuação)

