

(2/4) – Vivace

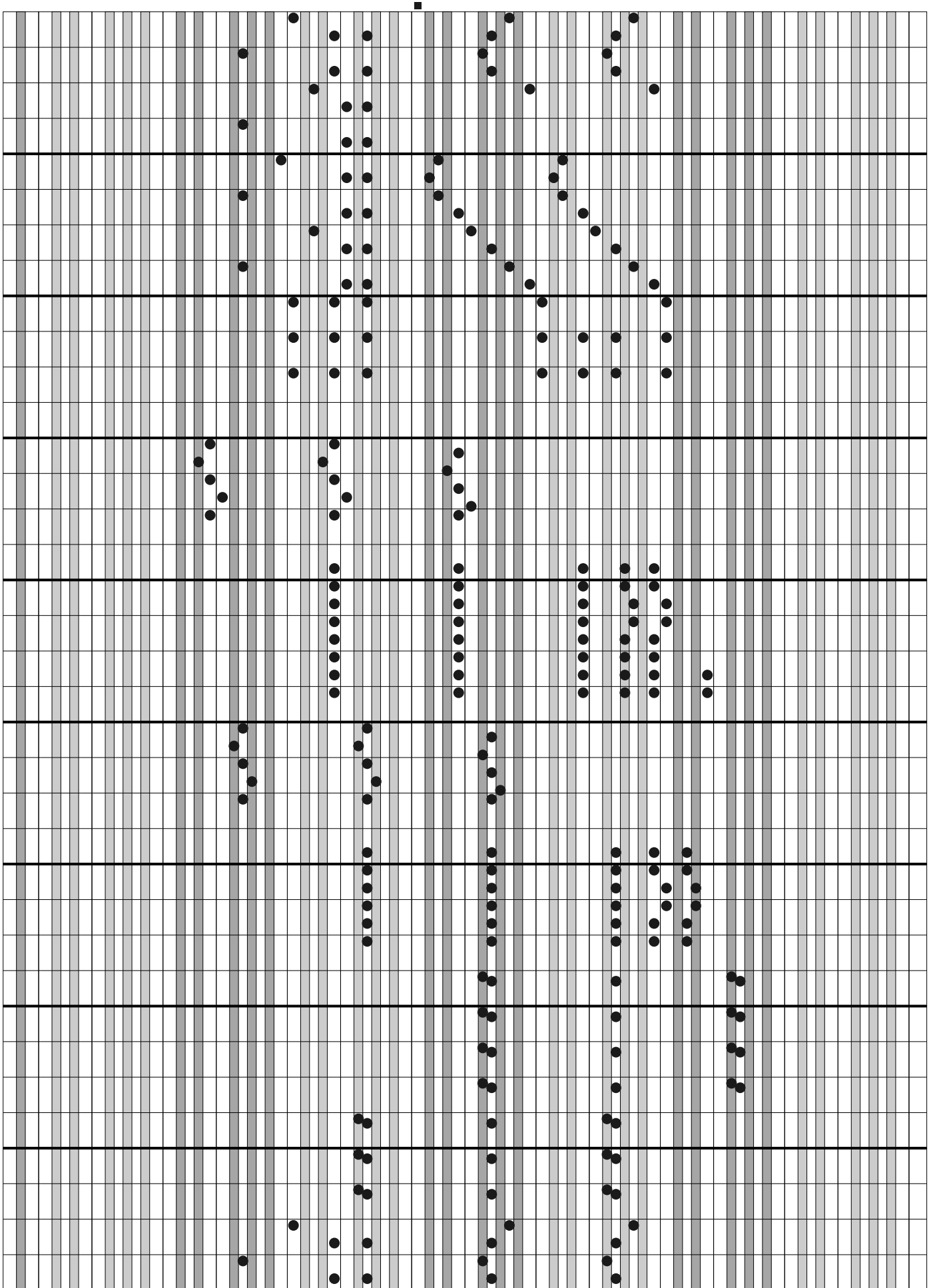
Op. 42

Letra:

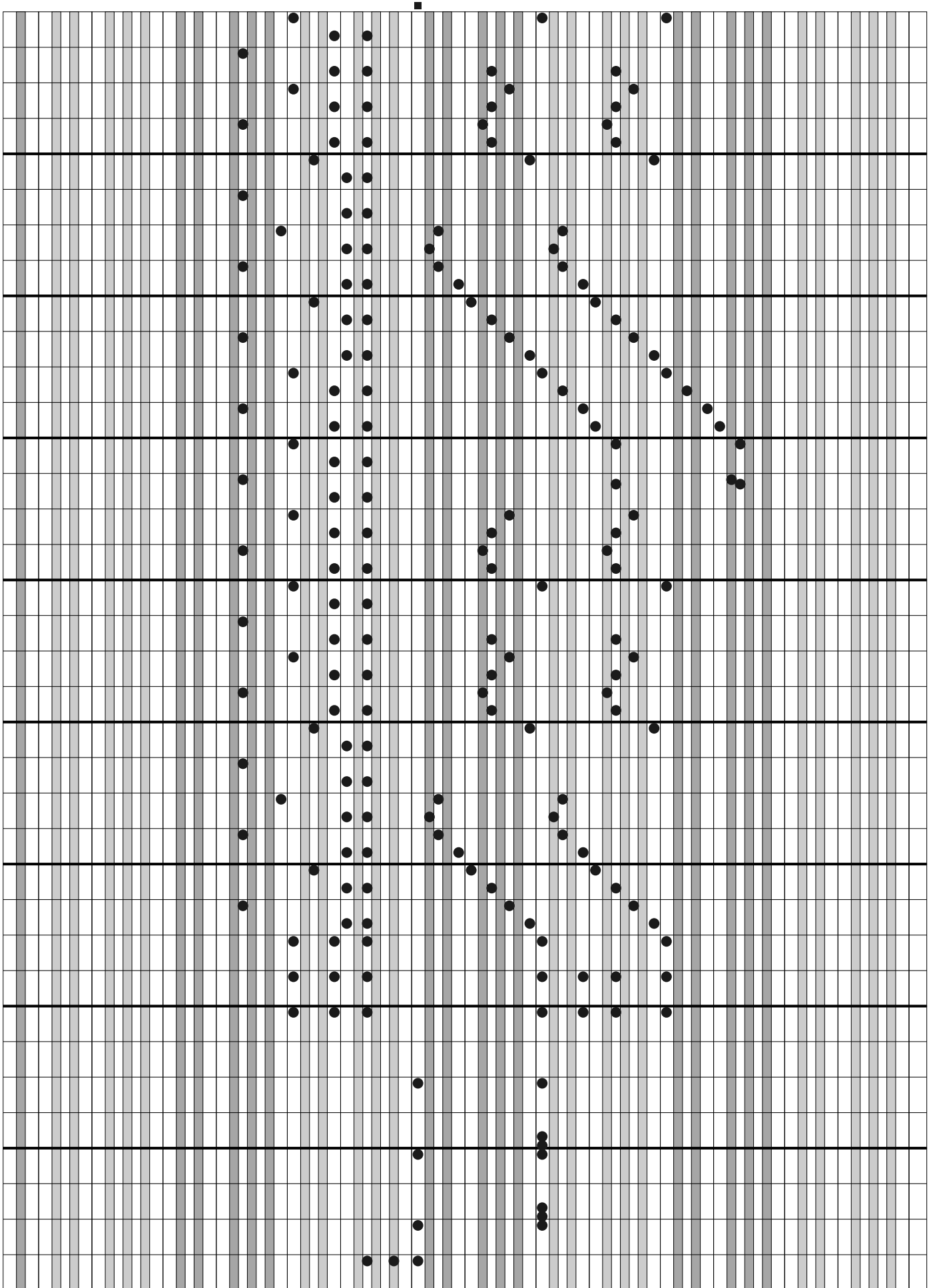
Música: G. LUDOVIC

The image displays a musical score for 'Galop du Diable' on a grid. The grid is composed of 10 horizontal staves, each with 16 vertical columns. The notation is represented by black dots placed on the grid lines. The first staff contains a few scattered dots in the first four columns. The second staff has dots in columns 2, 3, 4, and 5. The third staff has dots in columns 3, 4, and 5. The fourth staff has a vertical line of dots in column 5, with a few dots in columns 3 and 4. The fifth staff has dots in columns 2, 3, 4, 5, 6, 7, 8, 9, 10, 11, 12, 13, 14, 15, and 16. The sixth staff has dots in columns 2, 3, 4, 5, 6, 7, 8, 9, 10, 11, 12, 13, 14, 15, and 16. The seventh staff has dots in columns 2, 3, 4, 5, 6, 7, 8, 9, 10, 11, 12, 13, 14, 15, and 16. The eighth staff has dots in columns 2, 3, 4, 5, 6, 7, 8, 9, 10, 11, 12, 13, 14, 15, and 16. The ninth staff has dots in columns 2, 3, 4, 5, 6, 7, 8, 9, 10, 11, 12, 13, 14, 15, and 16. The tenth staff has dots in columns 2, 3, 4, 5, 6, 7, 8, 9, 10, 11, 12, 13, 14, 15, and 16.

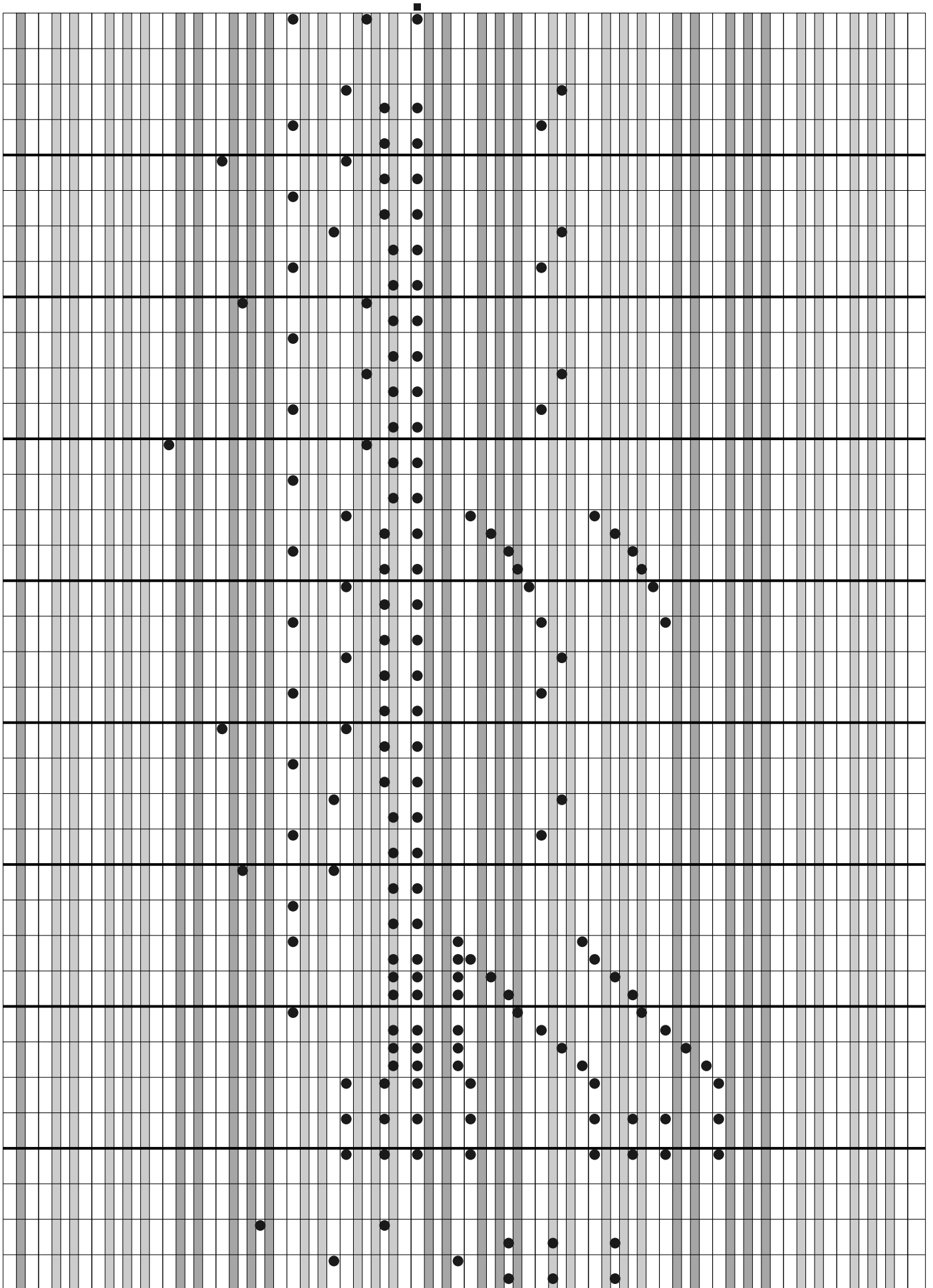
(continuação)



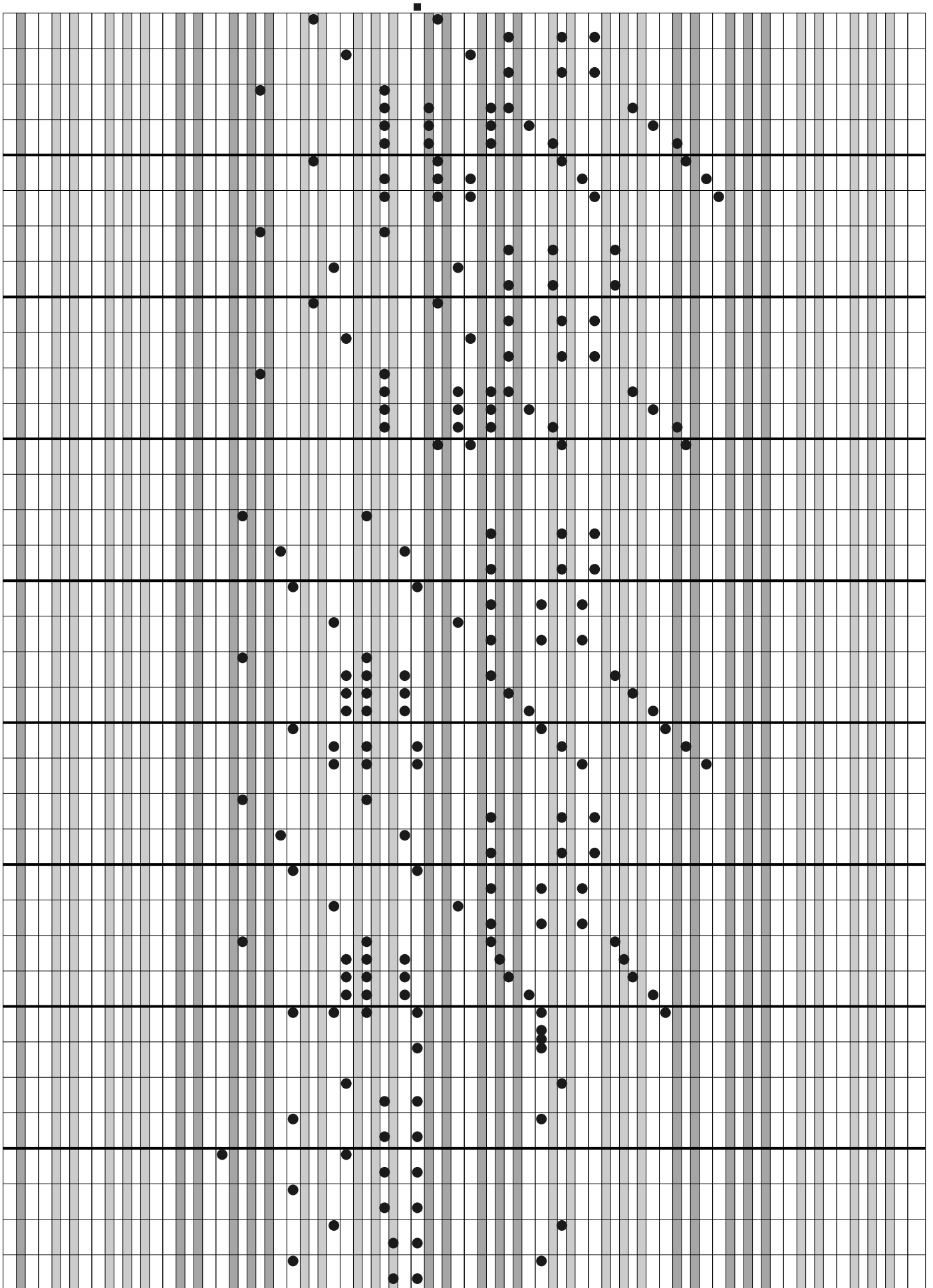
(continuação)



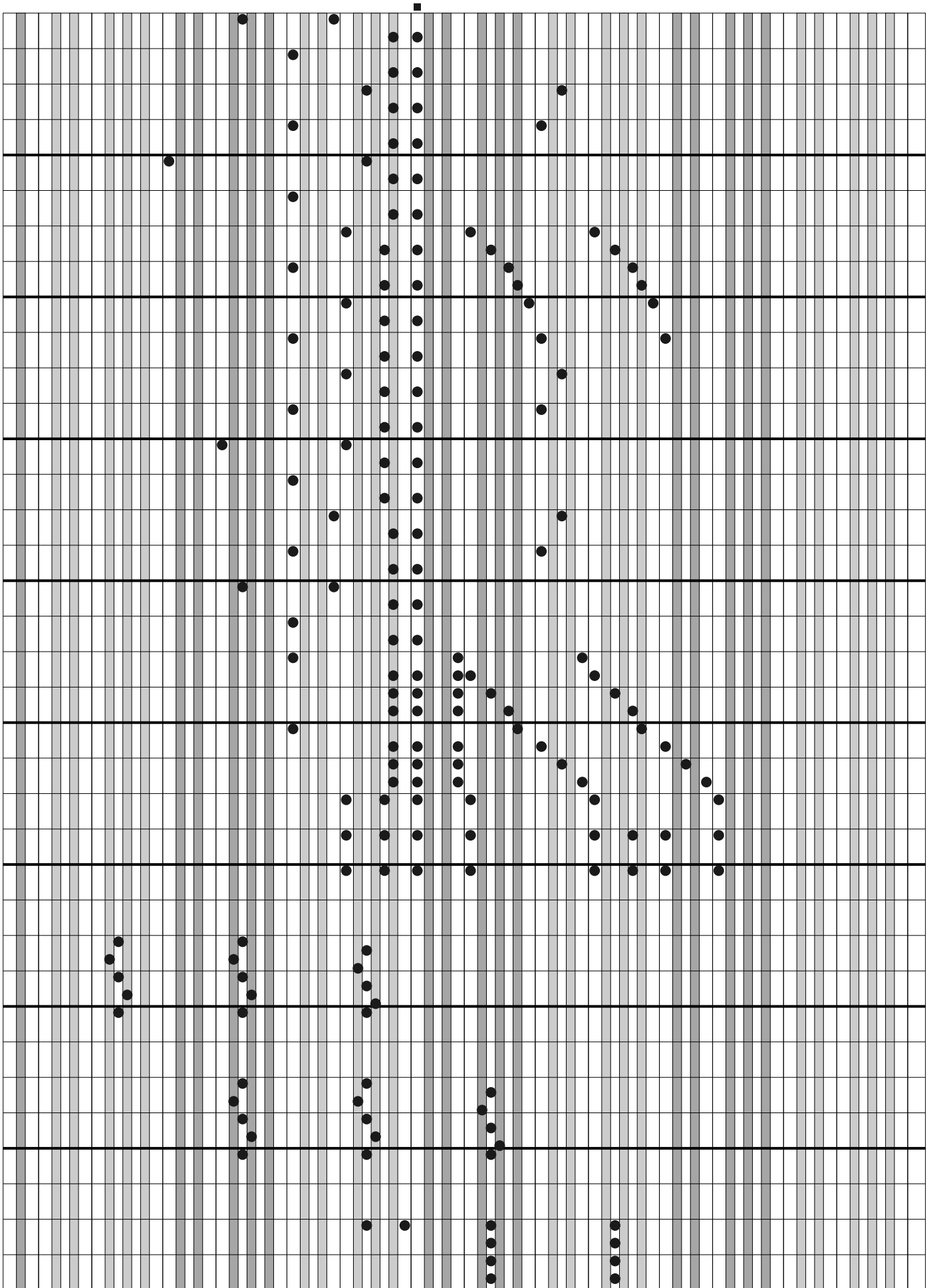
(continuação)



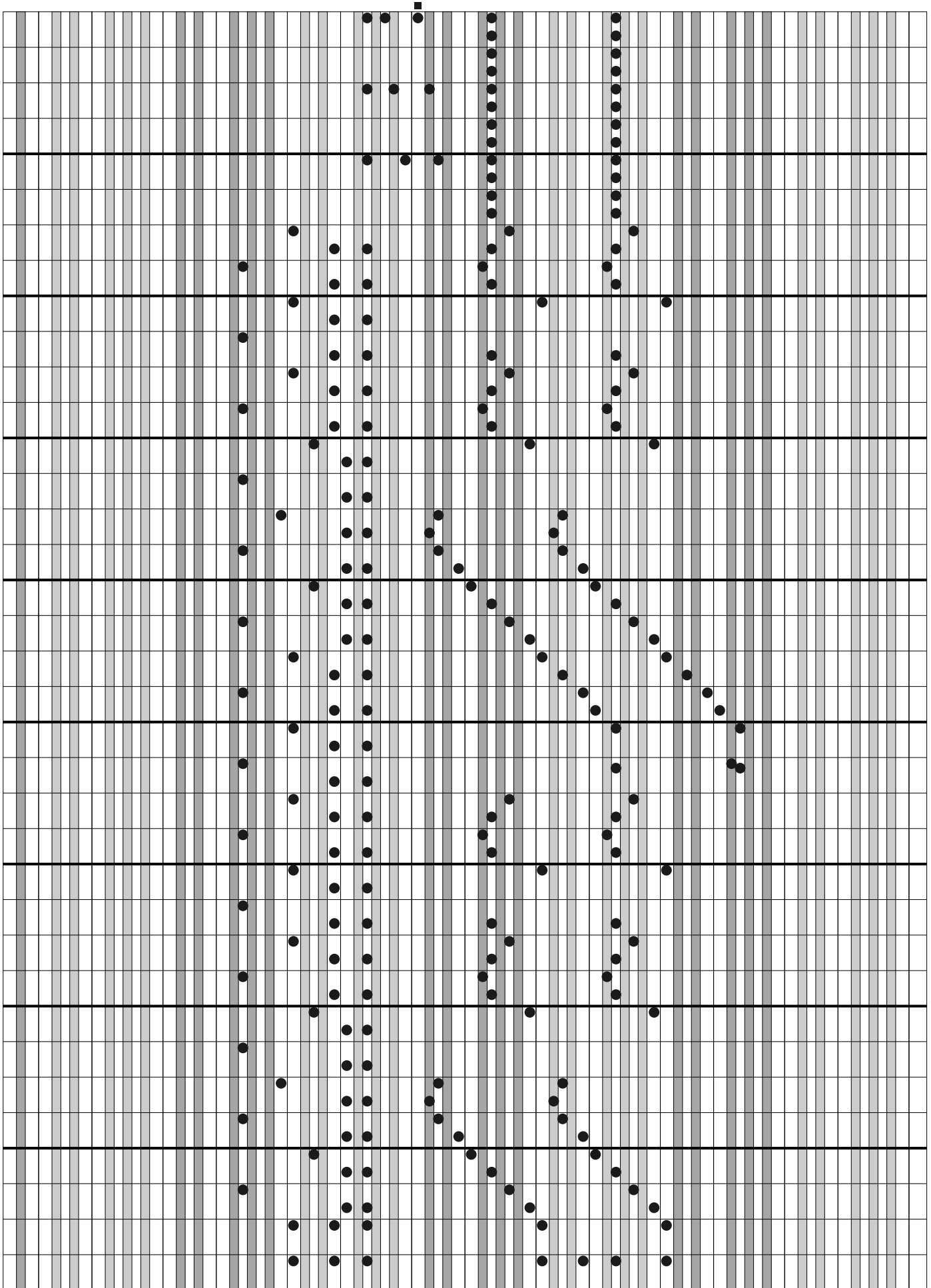
(continuação)



(continuação)



(continuação)



(continuação)

This image displays a musical score for 'Galop du Diable' on page 28. The score is presented on a grid of 10 staves, each consisting of five lines. The notation is a form of musical shorthand, likely a simplified notation for a specific instrument or a shorthand for a particular style. It features a series of vertical lines, some of which are shaded gray, and black dots placed at various intersections. The dots are arranged in patterns that suggest rhythmic values and melodic contours. The notation is organized into measures by vertical bar lines, and the staves are separated by horizontal lines. The overall layout is clean and structured, typical of a printed musical score.



(continuação)

