

(4/4)

Letra:

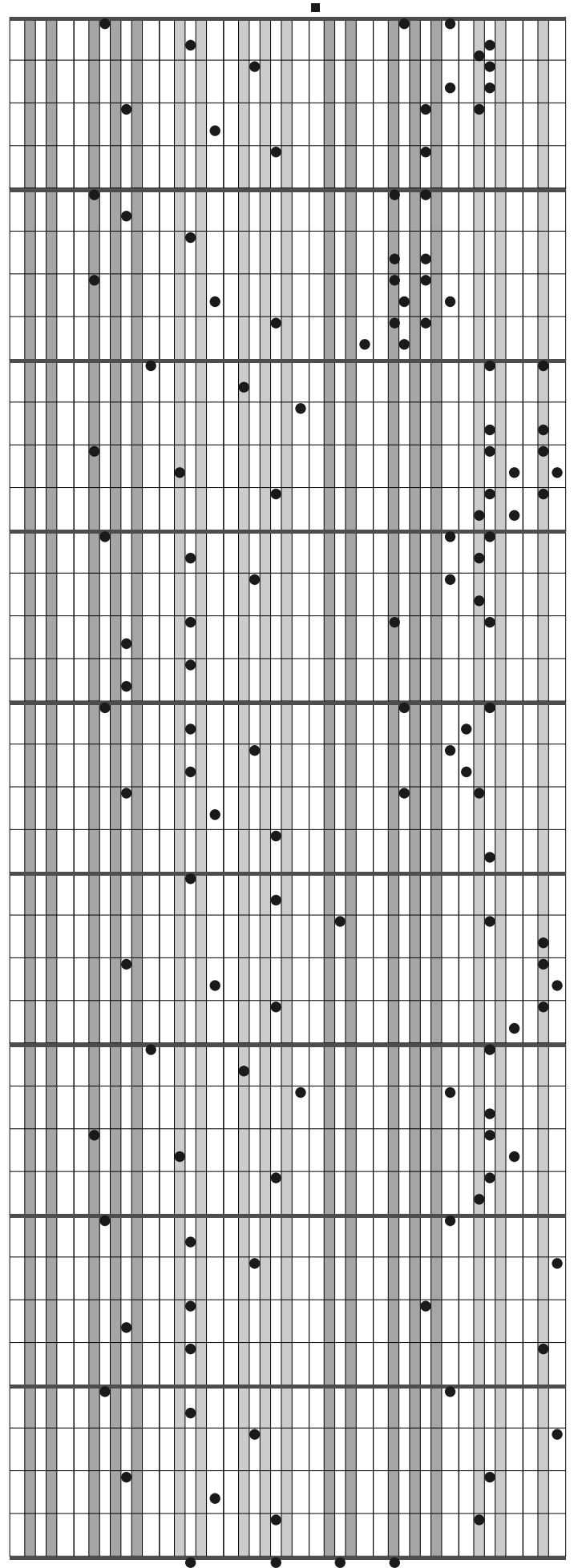
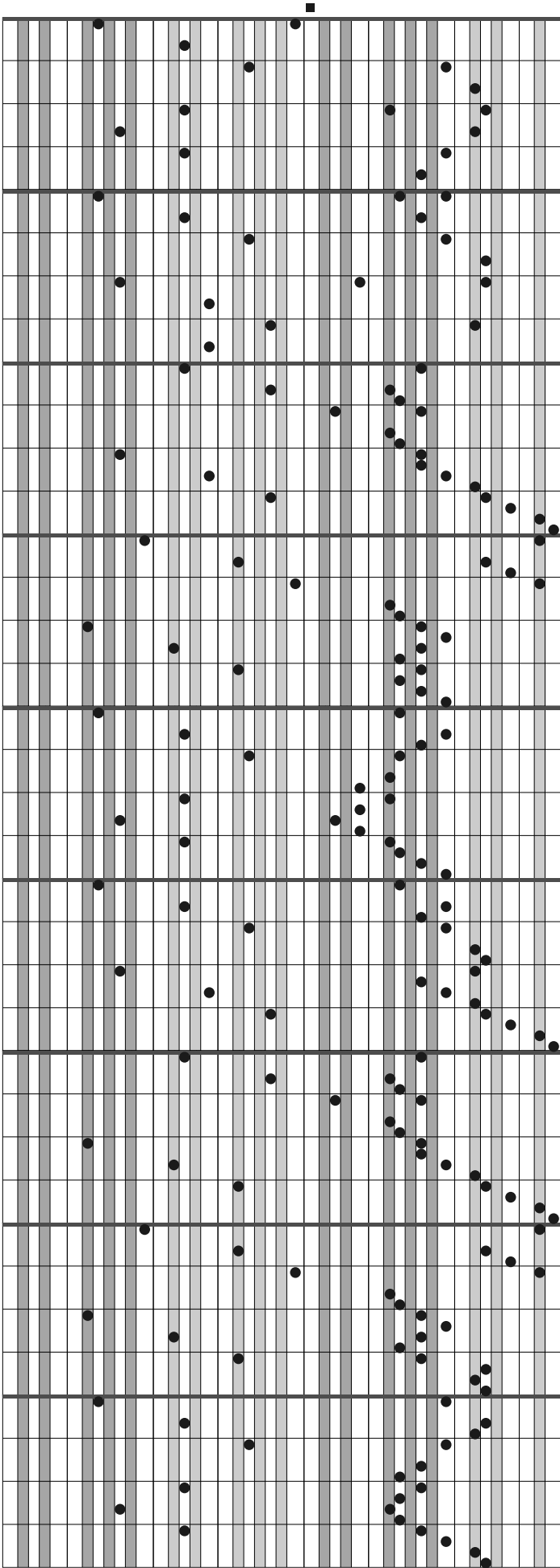
Música: Johann Pachelbel – 1653/1706



A musical score for the first system of 'Canon in D' by Johann Pachelbel. It consists of 12 staves. The notation is a simplified version of the original, using black dots for notes and vertical lines for stems. The notes are placed on a grid of 5 lines per staff. The music is in 4/4 time. The first staff begins with a small square marker above it.

A musical score for the second system of 'Canon in D' by Johann Pachelbel. It consists of 12 staves. The notation is a simplified version of the original, using black dots for notes and vertical lines for stems. The music is in 4/4 time. The first staff begins with a small square marker above it.

(continuação)



(continuação)

A musical staff with 11 systems of five-line staves. The first system contains several black dots representing notes. A small black square marker is positioned above the top line of the first staff. The notes are scattered across the first four systems, with some appearing on the same staff and others on adjacent ones. The remaining seven systems are empty.

An identical musical staff with 11 systems of five-line staves. A small black square marker is positioned above the top line of the first staff. The rest of the staff is empty.