

(6/8)

221 – Dear to the Heart of the Shepherd

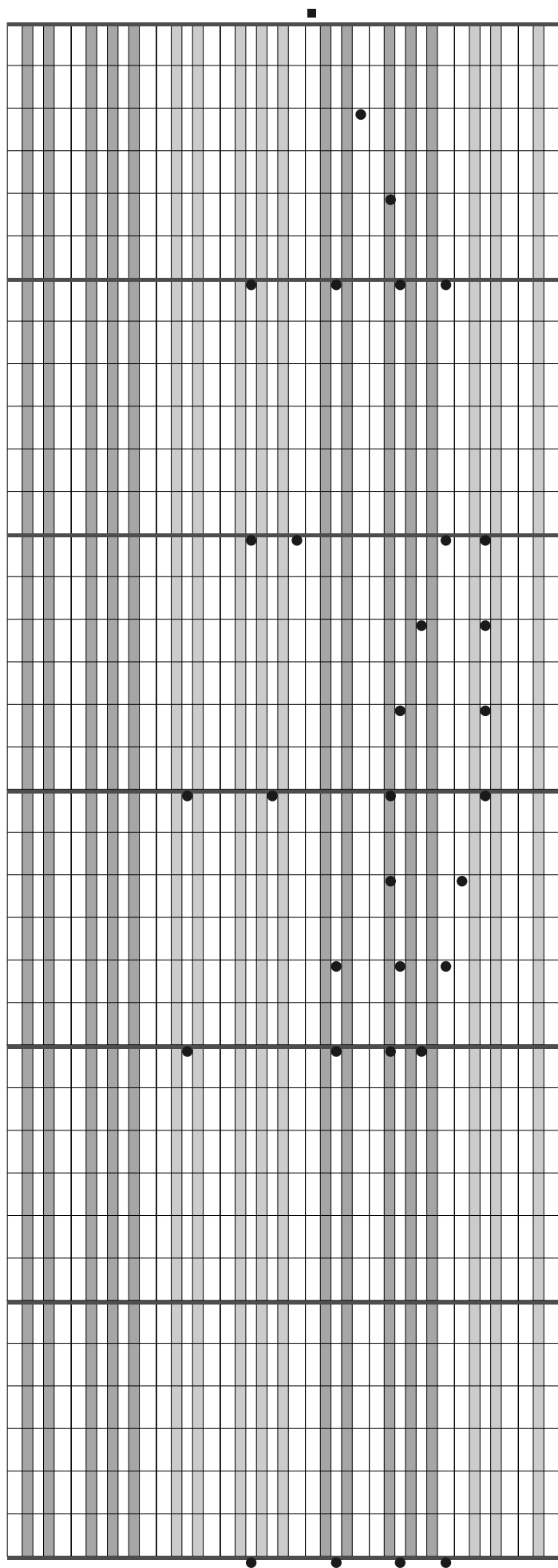
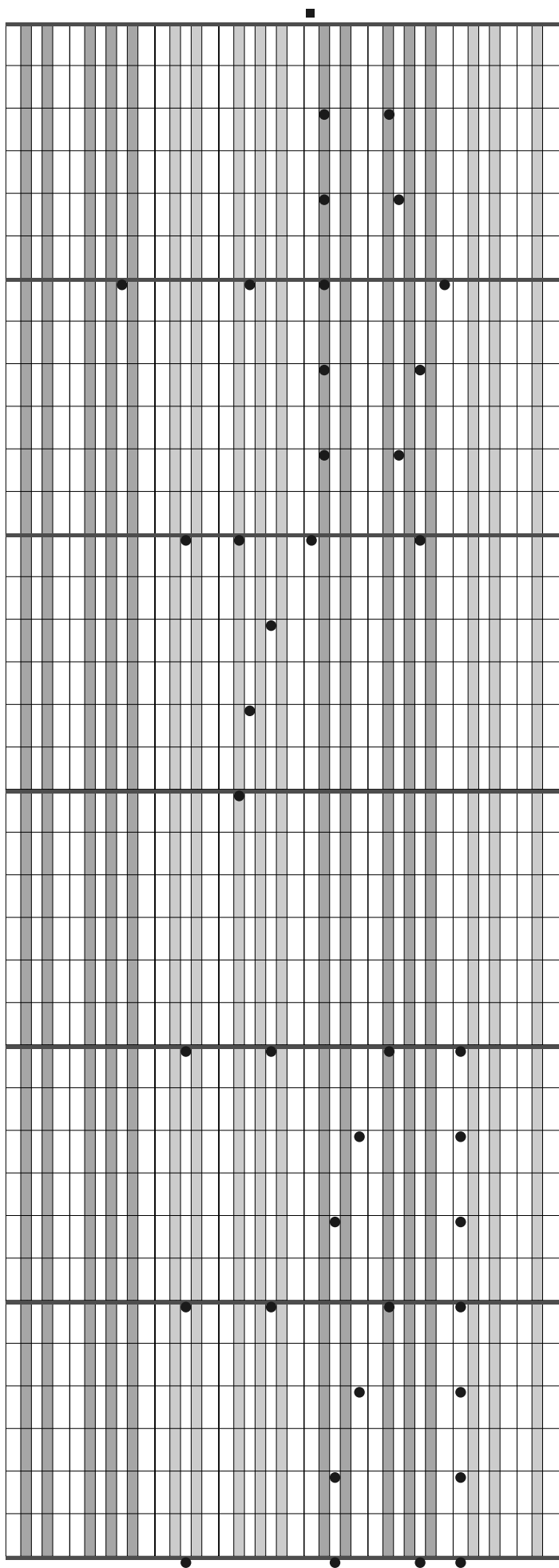
Letra: Mary B. Wingate, n. 1899

Música: William J. Kirkpatrick, 1838–1921

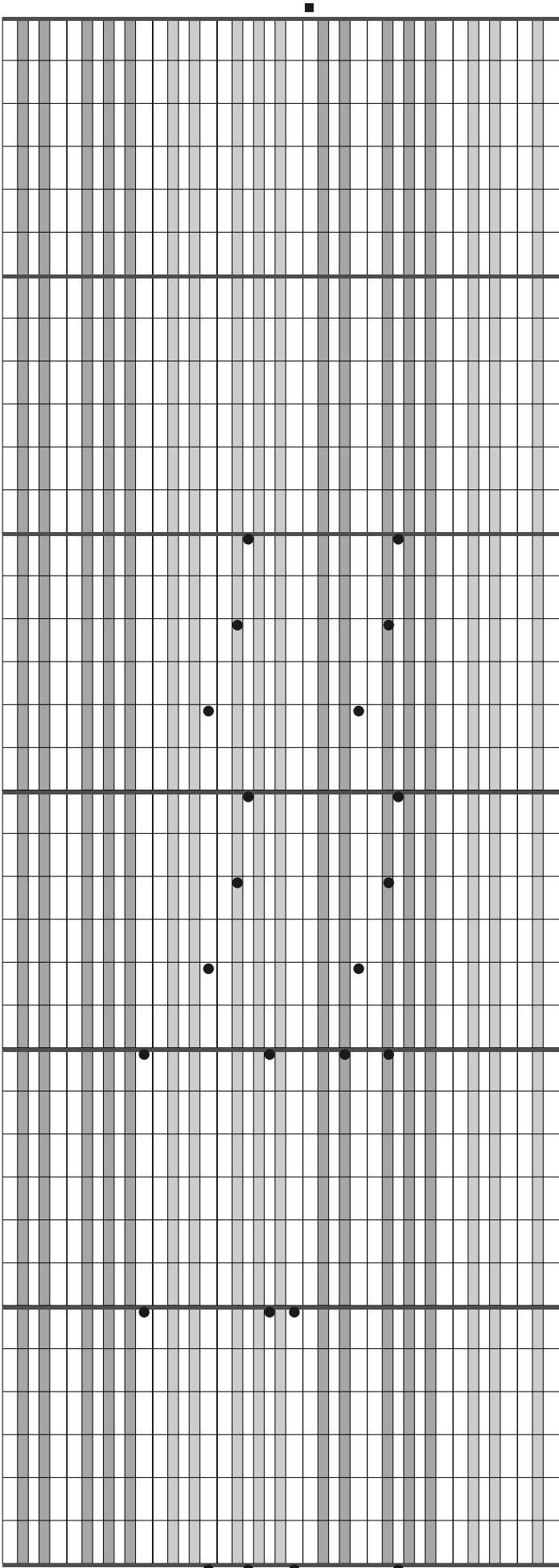
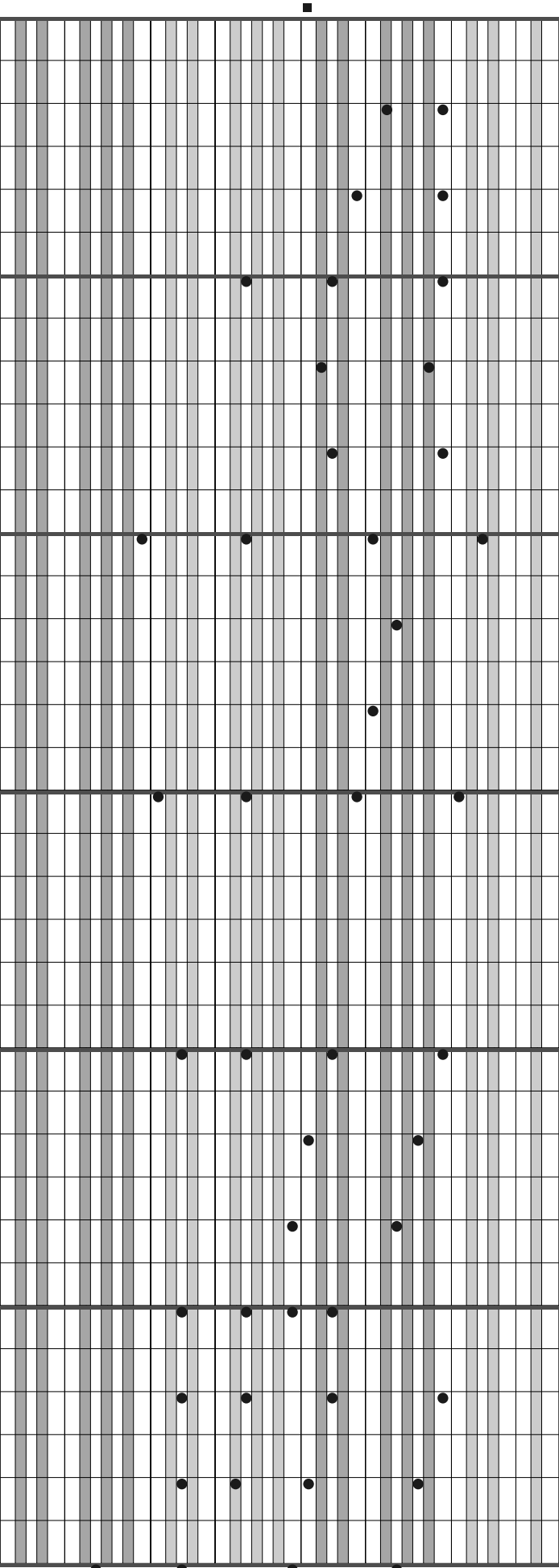
Musical score for the left hand of the hymn 'Ama o Pastor Seu Rebanho'. The score is written on a grand staff consisting of four five-line staves. The music is in 6/8 time and features a simple, repetitive melody. The notes are placed on the staves as follows: Staff 1 (top) has notes on the 4th and 5th lines; Staff 2 has notes on the 3rd and 4th lines; Staff 3 has notes on the 2nd and 3rd lines; Staff 4 (bottom) has notes on the 1st and 2nd lines. The melody is consistent across all four staves, with some notes appearing on multiple staves to indicate a specific fingering or articulation.

Musical score for the right hand of the hymn 'Ama o Pastor Seu Rebanho'. The score is written on a grand staff consisting of four five-line staves. The music is in 6/8 time and features a simple, repetitive melody. The notes are placed on the staves as follows: Staff 1 (top) has notes on the 4th and 5th lines; Staff 2 has notes on the 3rd and 4th lines; Staff 3 has notes on the 2nd and 3rd lines; Staff 4 (bottom) has notes on the 1st and 2nd lines. The melody is consistent across all four staves, with some notes appearing on multiple staves to indicate a specific fingering or articulation.

(continuação)



(continuação)



(continuação)

