

(6/8)

105 – Master, the Tempest Is Raging

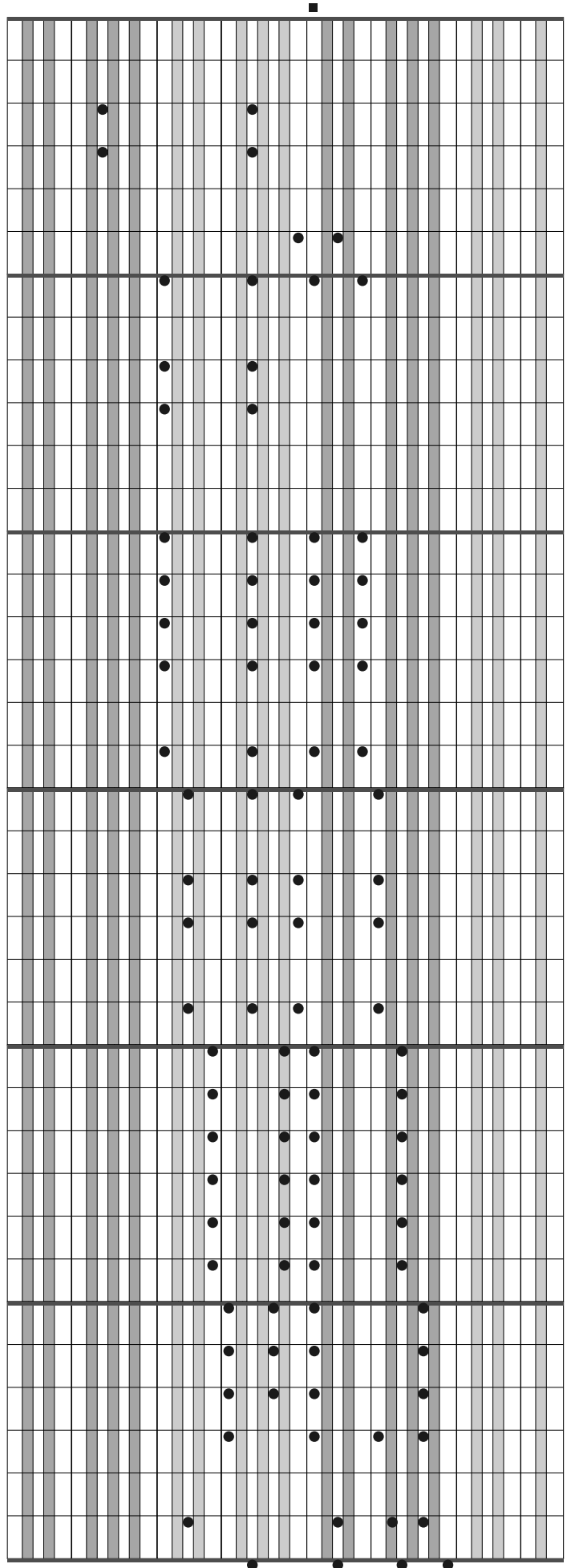
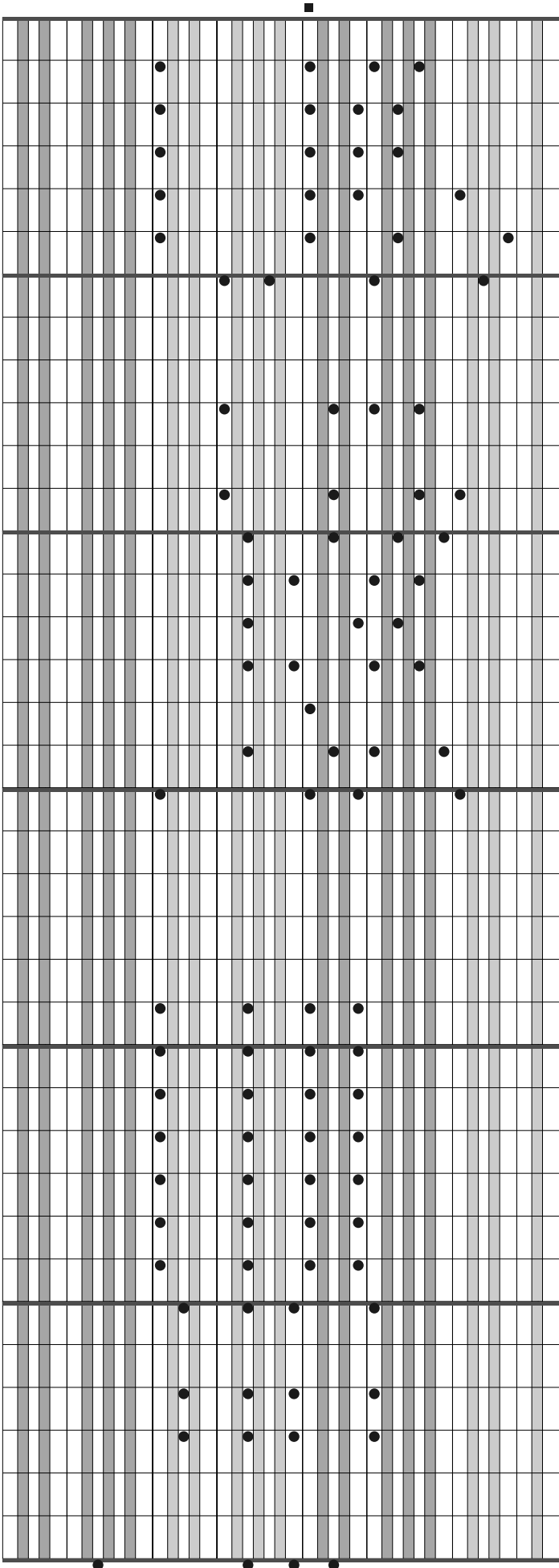
Letra: Mary Ann Baker, aprox. 1874

Música: H. R. Palmer, 1834–1907

The left-hand musical score is presented on a grand staff with five systems. Each system consists of a treble clef staff and a bass clef staff. The music is written in a simplified notation style using black dots for notes and stems. The piece is in 6/8 time, with a key signature of one flat (B-flat). The score begins with a square key signature symbol in the top right corner of the first system. The melody is primarily composed of eighth and sixteenth notes, with some rests. The bass line provides a steady accompaniment, often using a simple rhythmic pattern.

The right-hand musical score is presented on a grand staff with five systems. Each system consists of a treble clef staff and a bass clef staff. The notation is consistent with the left-hand score, using black dots for notes and stems. The piece is in 6/8 time with one flat. It begins with a square key signature symbol in the top right corner of the first system. The right-hand melody is more melodic and expressive, featuring a variety of note values including eighth, sixteenth, and thirty-second notes. The bass line is more active, often playing chords or moving lines that support the melody.

(continuação)



(continuação)

